

2023/3

FURNITURE LIGHTING

www.speedtek.com.cn

SNT LUX[®]



Speedtek is specialized in production of home electronic and furniture lighting for almost 20 years. With the relocation to Dongguan, our goal was to strengthen our product development. So far we have launched new products such as drivers, table lamps with wireless charger, wireless or wired chargers, bluetooth headphones beanies, photo shoot lights, massage guns and so on. All of them received very good market response because of their high level of innovation and design. Our focus market includes European, American and Oceanian countries, with most OEM and ODM clients from the a.m. markets.

We proudly announce our own brand new production plant with modern testing facilities, well-equipped production lines, skilled workers and an experienced R&D team. All of our products retain the latest internationally recognized certificates incl. GS, CE, S, BS, UL, CETL, SAA etc.

We are ISO 9001:2015 and BSCI certified company.

We apply the newest technology and offer you professional products, which possess characteristics like smart controls, energy-saving solutions, modern lifestyle designs, convenient innovations, and much more. If you are interested in any of our products or have any inquiries, please do not hesitate to contact us. You are sincerely welcome to visit our factory or meet us at various trade fairs.



SNT LUX —

Our brand name for quality and smart furniture lighting

CONTENTS

LOW VOLTAGE SPOT LIGHTING	03
----------------------------------	-----------

HIGH VOLTAGE SPOT LIGHTING	23
-----------------------------------	-----------

PANEL AND STRIP LIGHTING	29
---------------------------------	-----------

LIGHTING SYSTEMS (CONTROLS & ACCESSORIES)	39
--	-----------

LOW VOLTAGE SPOT LIGHTING



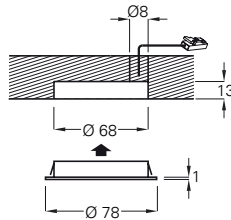
CL12R-CCT

RECESSED LED SPOT LIGHT CCT WARM WHITE AND DAY WHITE SWITCHING



color temperature dimming

Cutout: Ø 68mm



GENERAL FEATURES

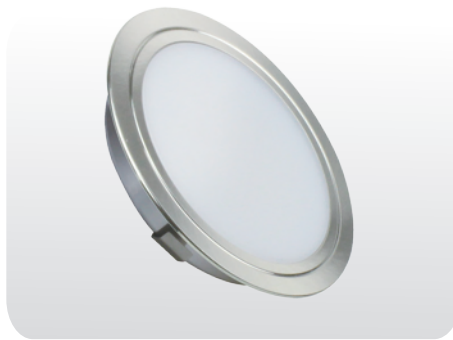
- For recess mounting-screw fixing
- Light source: 2x36pcs. SMD 2835 LED
- High lumen output, homogenous light
- No visible LED dots
- Material: anodized aluminum ring with frosted cover
- Finish: satin nickel / polished chrome / aluminum brushed
- LED driver: constant voltage type
- Average lifespan: 25000hrs

ELECTRICAL AND PHOTOMETRIC CHARACTERISTICS

- Input voltage: DC 12/24V
- Lumen: 220Lm
- CRI: 80
- Angle: 120°
- Power: 3.8W
- Color temperature: 3000K/4000K/6500K
- Energy efficiency class: E

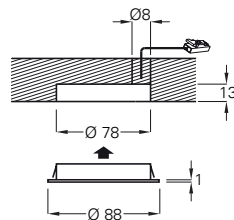
CL13R-CCT

RECESSED LED SPOT LIGHT CCT INVISIBLE LED DOTS 3.6W 300LM



color temperature dimming

Cutout: Ø 78mm



GENERAL FEATURES

- For recess mounting-screw fixing
- Light source: 2x48pcs. SMD 2835 LED
- High lumen output, homogenous light
- No visible LED dots
- Material: anodized aluminum ring with frosted cover
- Finish: satin nickel / polished chrome / aluminum brushed
- LED driver: constant voltage type
- Average lifespan: 25000hrs

ELECTRICAL AND PHOTOMETRIC CHARACTERISTICS

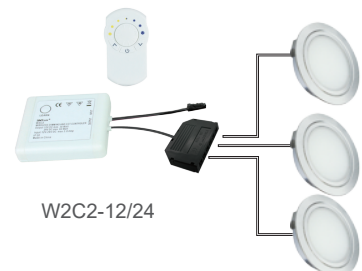
- Input voltage: DC 12/24V
- Lumen: 240Lm
- CRI: 80
- Angle: 120°
- Power: 3.8W
- Color temperature: 3000K/4000K/6500K
- Energy efficiency class: E

SPECIFICATIONS

MODEL NO.	DESCRIPTION	WATT	LUMEN	LIGHT CABLE
CL12R-CCT	1 x LED spot light	3.8W	220	2m lead with mini connector
CL13R-CCT	1 x LED spot light	3.8W	240	2m lead with mini connector



3 x LED SPOT LIGHT KIT



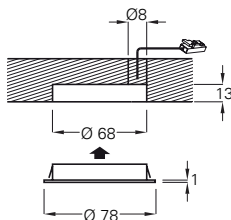
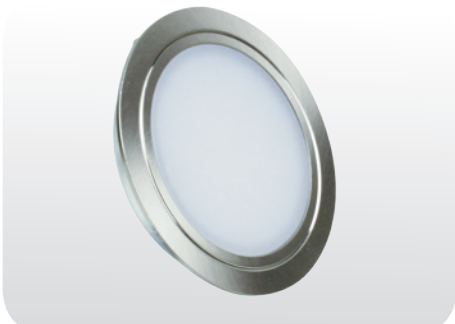
W2C2-12/24

CL12R

**RECESSED 36 x LED SPOT LIGHT
INVISIBLE LED DOTS 3.8W 260LM**

CL12D

**RECESSED 36 x LED SPOT LIGHT
INVISIBLE LED DOTS 3.8W 220LM
CONSTANT VOLTAGE DIMMING**



Cutout: Ø 68mm



GENERAL FEATURES

- For recess mounting
- Surface mounting ring optional
- Light source: 36pcs. SMD 2835 LED
- High lumen output, homogenous light
- No visible LED dots
- Material: anodized aluminum ring with frosted cover
- Finish: satin nickel / polished chrome / aluminum brushed
- LED driver: constant voltage type
- Average lifespan: 25000hrs

ELECTRICAL AND PHOTOMETRIC CHARACTERISTICS

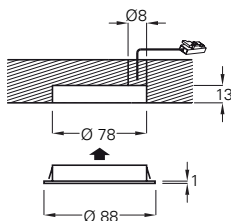
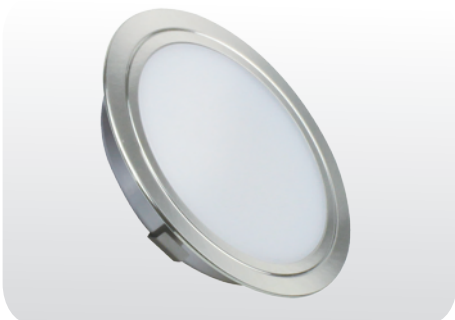
- Input voltage: DC 12/24V
- CRI: 80
- Angle: 120°
- Color temperature: 3000K/4000K/6500K
- Energy efficiency class: E

CL13R

**RECESSED 48 x LED SPOT LIGHT
INVISIBLE LED DOTS 3.8W 280LM**

CL13D

**RECESSED 48 x LED SPOT LIGHT
INVISIBLE LED DOTS 3.8W 230LM
CONSTANT VOLTAGE DIMMING**



Cutout: Ø 78mm



GENERAL FEATURES

- For recess mounting
- Light source: 48pcs. SMD 2835 LED
- High lumen output, homogenous light
- No visible LED dots
- Material: anodized aluminum ring with frosted cover
- Finish: satin nickel / polished chrome / aluminum brushed
- LED driver: constant voltage type
- Average lifespan: 25000hrs

ELECTRICAL AND PHOTOMETRIC CHARACTERISTICS

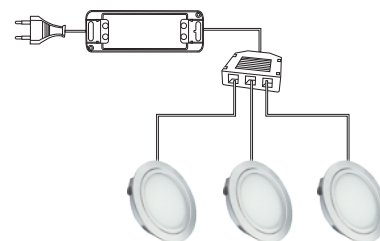
- Input voltage: DC 12/24V
- CRI: 80
- Angle: 120°
- Color temperature: 3000K/4000K/6500K
- Energy efficiency class: E



SPECIFICATIONS

MODEL NO.	DESCRIPTION	VOLTAGE	WATT	LUMEN	LIGHT CABLE
CL12R	1 x LED spot light	DC 12V	3.8W	260	2m lead with mini connector
CL12R	1 x LED spot light	DC 24V	3.8W	250	2m lead with mini connector
CL12D	1 x LED spot light	DC 12V	3.8W	220	2m lead with mini connector
CL12D	1 x LED spot light	DC 24V	3.8W	250	2m lead with mini connector
CL12Rx3	3 x LED spot light with driver	DC 12V	3.8W	3 x 260	2m lead with mini connector
CL13R	1 x LED spot light	DC 12V	3.8W	280	2m lead with mini connector
CL13R	1 x LED spot light	DC 24V	3.8W	280	2m lead with mini connector
CL13D	1 x LED spot light	DC 12V	3.8W	230	2m lead with mini connector
CL13D	1 x LED spot light	DC 24V	3.8W	280	2m lead with mini connector
CL13Rx3	3 x LED spot light with driver	DC 12V	3.8W	3 x 280	2m lead with mini connector

3 x LED SPOT LIGHT KIT



CL07R

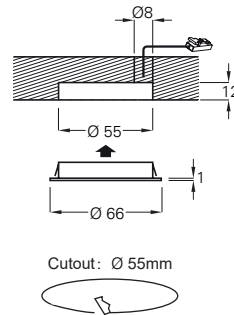
**RECESSED 24 x LED SPOT LIGHT
INVISIBLE LED DOTS 3.6W 240LM**

CL07E

**RECESSED 24 x LED SPOT LIGHT
ECONOMICAL VERSION 1.8W 100LM**

CL07D

**RECESSED 24 x LED SPOT LIGHT
CONSTANT VOLTAGE DIMMING 3.6W 200LM**



Cutout: Ø 55mm



GENERAL FEATURES

- For recess mounting
- Light Source: 24 pcs. SMD 2835 LED
- High lumen output homogenous light
- No visible LED dots
- Material: anodized aluminium ring with frosted cover
- Finish: satin nickel / polished chrome / aluminum brushed
- LED drivers: constant voltage type
- Average lifespan: 25000hrs

ELECTRICAL AND PHOTOMETRIC CHARACTERISTICS

- Input voltage: DC 12V/24V
- CRI: 80
- Beam angle: 120°
- Color temperature: 3000K/4000K/6500K
- Energy efficiency class: E

CL07P

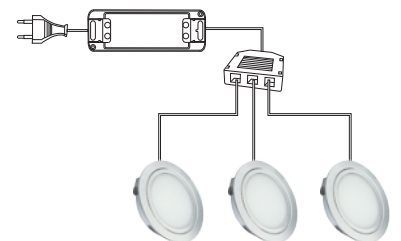
RECESSED 24 x LED SPOT LIGHT



SPECIFICATIONS

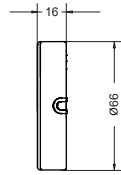
MODEL NO.	DESCRIPTION	VOLTAGE	WATT	LUMEN	LIGHT CABLE
CL07R	1 x LED spot light	DC 12V	3.6W	250	2m lead with mini connector
CL07R	1 x LED spot light	DC 24V	3.6W	200	2m lead with mini connector
CL07Rx3	3 x LED spot light with driver	DC 12V	3.6W	3x250	2m lead with mini connector
CL07E	1 x LED spot light	DC 12V	1.8W	100	2m lead with mini connector
CL07Ex3	3 x LED spot light with driver	DC 12V	1.8W	3 x 100	2m lead with mini connector
CL07D	1 x LED spot light	DC 12V	3.6W	190	2m lead with mini connector
CL07D	1 x LED spot light	DC 24V	3.6W	200	2m lead with mini connector
CL07Dx3	3 x LED spot light with driver	DC 12V	3.6W	3x190	2m lead with mini connector

3 x LED SPOT LIGHT KIT



CL07S

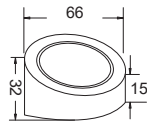
SURFACE MOUNTED WITH SPACER



MODEL NO.	DESCRIPTION	LIGHT CABLE
CL07S	1 x LED spot light	2m lead with mini connector
CL07Sx3	3 x LED spot light with driver	2m lead with mini connector

CL07SL

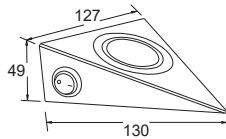
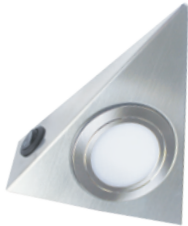
**SURFACE MOUNTED WITH ANGLED SPACER
C/W SWITCH OR W/O SWITCH**



MODEL NO.	DESCRIPTION	LIGHT CABLE
CL07SL	1 x LED spot light (w/o switch)	2m lead with mini connector
CL07SLS	1 x LED spot light (with switch)	2m lead with mini connector
CL07SLx3	3 x LED spot light with driver	2m lead with mini connector

CL07T

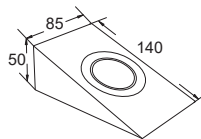
**STAINLESS STEEL TRIANGLE SHAPED
C/W SWITCH OR W/O SWITCH**



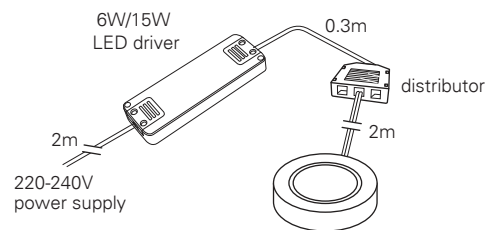
MODEL NO.	DESCRIPTION	LIGHT CABLE
CL07T	1 x LED spot light (w/o switch)	2m lead with mini connector
CL07TS	1 x LED spot light (with switch)	2m lead with mini connector
CL07Tx3	3 x LED spot light with driver	2m lead with mini connector

CL07W

**STAINLESS STEEL WEDGE SHAPED
C/W SWITCH OR W/O SWITCH**



MODEL NO.	DESCRIPTION	LIGHT CABLE
CL07W	1 x LED spot light (w/o switch)	2m lead with mini connector
CL07WS	1 x LED spot light (with switch)	2m lead with mini connector
CL07Wx3	3 x LED spot light with driver	2m lead with mini connector



CL02R

RECESSED 24 x LED SPOT LIGHT

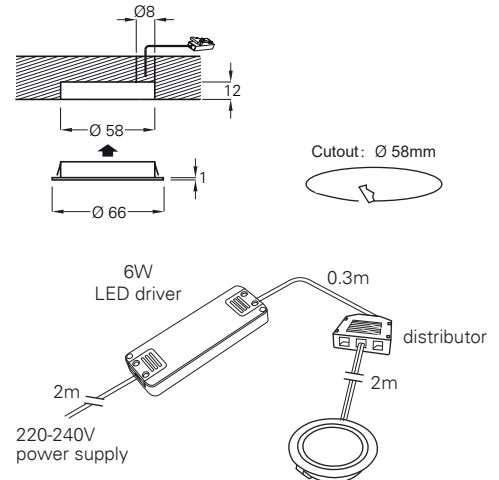


GENERAL FEATURES

- For recess mounting
- Light Source: 24 pcs. SMD 3528 LED
- High lumen output with optical lens
- Material: anodized aluminium ring with prismatic cover
- Finish: satin nickel / polished chrome / aluminum brushed
- LED drivers: constant voltage type
- Average lifespan: 25000hrs

ELECTRICAL AND PHOTOMETRIC CHARACTERISTICS

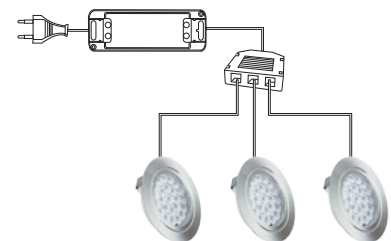
- Input voltage: DC 12V/24V
- Lumen: 100LM
- CRI: 80
- Beam angle: 120°
- Power: 1.8W
- Color temperature: 3000K/4000K/6500K
- Energy efficiency class: E



SPECIFICATIONS

MODEL NO.	DESCRIPTION	LIGHT CABLE
CL02R	1 x LED spot light	2m lead with mini connector
CL02Rx3	3 x LED spot light with driver	2m lead with mini connector

3 x LED SPOT LIGHT KIT



CL02S

SURFACE MOUNTED WITH SPACER



MODEL NO.	DESCRIPTION	LIGHT CABLE
CL02S	1 x LED spot light	2m lead with mini connector
CL02Sx3	3 x LED spot light with driver	2m lead with mini connector

CL02SL

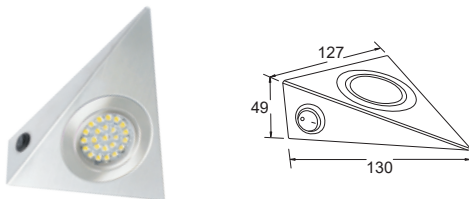
**SURFACE MOUNTED WITH ANGLED SPACER
C/W SWITCH OR W/O SWITCH**



MODEL NO.	DESCRIPTION	LIGHT CABLE
CL02SL	1 x LED spot light (w/o switch)	2m lead with mini connector
CL02SLS	1 x LED spot light (with switch)	2m lead with mini connector
CL02SLx3	3 x LED spot light with driver	2m lead with mini connector

CL02T

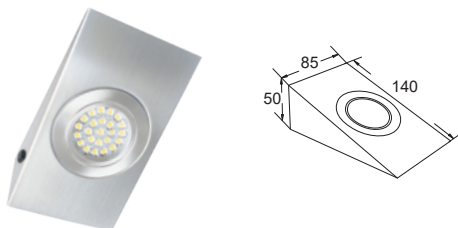
**STAINLESS STEEL TRIANGLE SHAPED
C/W SWITCH OR W/O SWITCH**



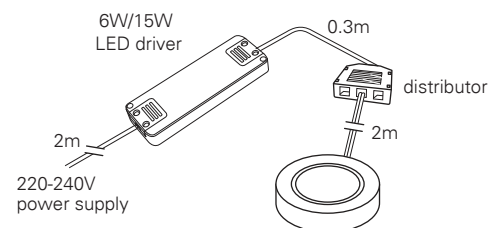
MODEL NO.	DESCRIPTION	LIGHT CABLE
CL02T	1 x LED spot light (w/o switch)	2m lead with mini connector
CL02TS	1 x LED spot light (with switch)	2m lead with mini connector
CL02Tx3	3 x LED spot light with driver	2m lead with mini connector

CL02W

**STAINLESS STEEL WEDGE SHAPED
C/W SWITCH OR W/O SWITCH**

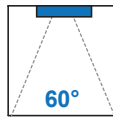
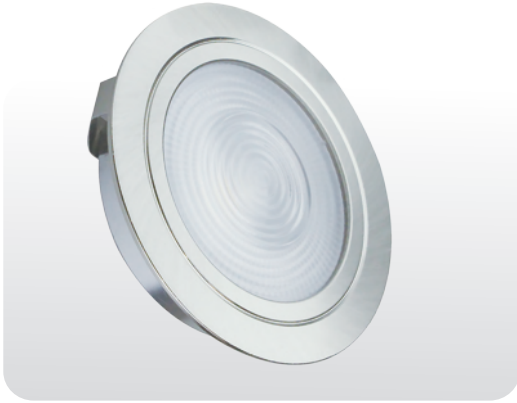


MODEL NO.	DESCRIPTION	LIGHT CABLE
CL02W	1 x LED spot light (w/o switch)	2m lead with mini connector
CL02WS	1 x LED spot light (with switch)	2m lead with mini connector
CL02Wx3	3 x LED spot light with driver	2m lead with mini connector



CL08R

RECESSED COB LED SPOT LIGHT
HIGH LUMEN OUTPUT WITH LENS
MATERIAL: ALUMINIUM



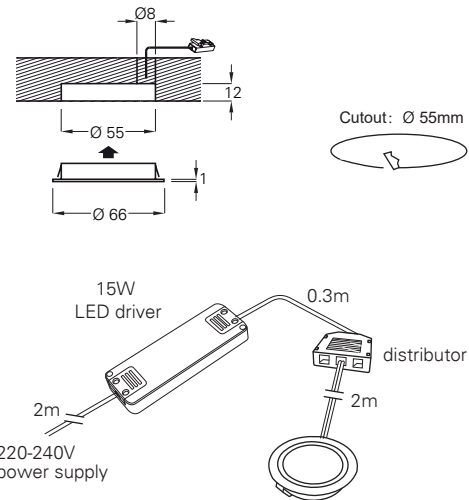
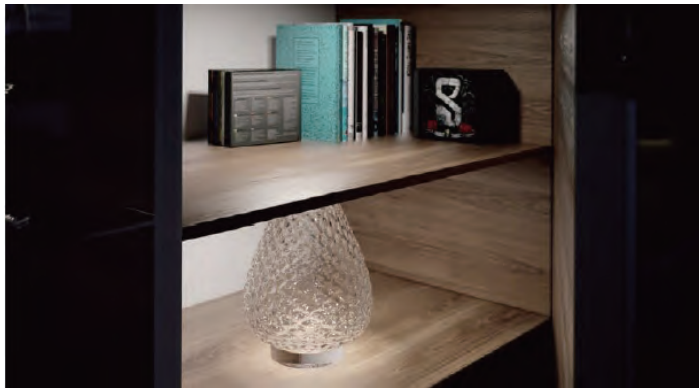
similar to halogen spot angle

GENERAL FEATURES

- For recessed mounting-screw fixing
- Light source: COB LED, which provides enhanced efficiency, a higher light output and a more uniform appearance
- This fitting has a 60° emitting angle
- Finish: satin nickel / polished chrome / aluminum brush
- LED drivers: constant voltage type
- Average lifespan: 25000hrs

ELECTRICAL AND PHOTOMETRIC CHARACTERISTICS

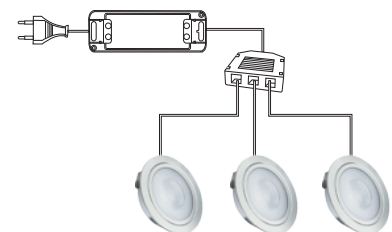
- Input voltage: DC 12V/24V
- Lumen: 280LM
- CRI: 80
- Beam angle: 60°
- Power: 3.6W
- Color temperature: 3000K/4000K/6500K
- Energy efficiency class: E



SPECIFICATIONS

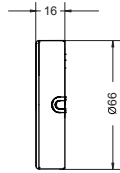
MODEL NO.	DESCRIPTION	LIGHT CABLE
CL08R	1 x COB LED spot light	2m lead with mini connector
CL08Rx3	3 x COB LED spot light with driver	2m lead with mini connector

3 x LED SPOT LIGHT KIT



CL08S

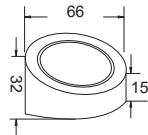
SURFACE MOUNTED WITH SPACER



MODEL NO.	DESCRIPTION	LIGHT CABLE
CL08S	1 x COB LED spot light	2m lead with mini connector
CL08Sx3	3 x COB LED spot light with driver	2m lead with mini connector

CL08SL

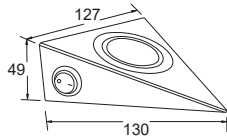
**SURFACE MOUNTED WITH ANGLED SPACER
C/W SWITCH OR W/O SWITCH**



MODEL NO.	DESCRIPTION	LIGHT CABLE
CL08SL	1 x COB LED spot light (w/o switch)	2m lead with mini connector
CL08SLS	1 x COB LED spot light (with switch)	2m lead with mini connector
CL08SLx3	3 x COB LED spot light with driver	2m lead with mini connector

CL08T

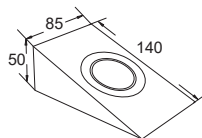
**STAINLESS STEEL TRIANGLE SHAPED
C/W SWITCH OR W/O SWITCH**



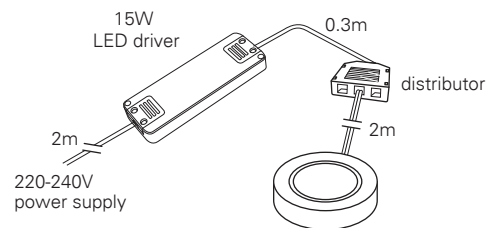
MODEL NO.	DESCRIPTION	LIGHT CABLE
CL08T	1 x COB LED spot light (w/o switch)	2m lead with mini connector
CL08TS	1 x COB LED spot light (with switch)	2m lead with mini connector
CL08Tx3	3 x COB LED spot light with driver	2m lead with mini connector

CL08W

**STAINLESS STEEL WEDGE SHAPED
C/W SWITCH OR W/O SWITCH**

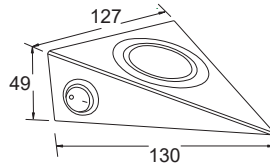


MODEL NO.	DESCRIPTION	LIGHT CABLE
CL08W	1 x COB LED spot light (w/o switch)	2m lead with mini connector
CL08WS	1 x COB LED spot light (with switch)	2m lead with mini connector
CL08Wx3	3 x COB LED spot light with driver	2m lead with mini connector



CL08TS

STAINLESS STEEL TRIANGLE LIGHT WITH MANUAL SWITCH (WITH MASTER-SLAVE FUNCTION)



GENERAL FEATURES

- Manual switch
- Traditional and affordable

GENERAL FEATURES

- Master-slave system
- Each light comes with 2m cable
- Includes 1 x 6 way distributor
- Includes 1 x 6W/15W LED driver
- High lumen output with optical lens
- Material: stainless steel housing
- Finish: satin nickel
- Average lifespan: 25000hrs

SPOT LIGHTS



CL02R
100LM
1.8W



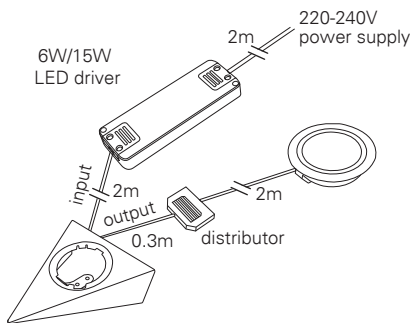
CL07R
240LM
3.6W



CL07E
100LM
1.8W



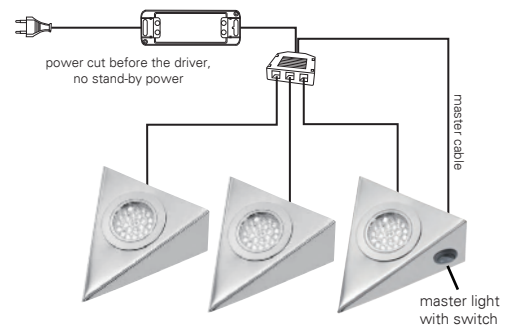
CL08R
250LM
3.6W



OPTIONAL SWITCH

- Without switch
- Touch switch
- Movement sensor switch
- With manual switch

STAINLESS STEEL TRIANGLE LIGHT KIT WITH MASTER-SLAVE SWITCHING FUNCTION

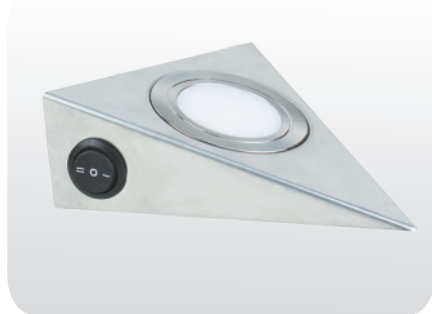


SPECIFICATIONS

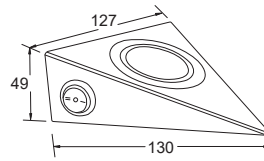
MODEL NO.	DESCRIPTION	VOLT.	WATT	LEDs	LUMEN	3PCS. PACK MODEL NO.
CL02TS	1x manual switch triangle light	12/24	1.8	24	100	CL02TSx3
CL07TS	1x manual switch triangle light	12/24	3.6	24	240	CL07TSx3
CL08TS	1x manual switch triangle light	12/24	3.6	COB	250	CL08TSx3

CL07TC

3 POLE SWITCH TRIANGLE LIGHT
COLOR CONTROL



II: warm white
o: OFF
I: day white



GENERAL FEATURES

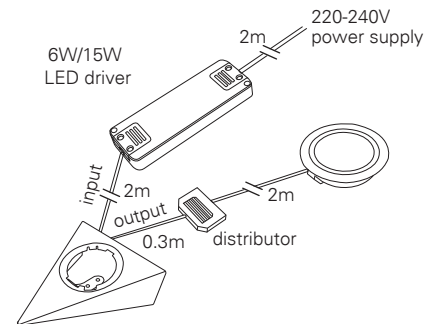
- For surface mounting with screw fixing
- 2 core wire color control solution
- Light source: 2x24 pcs. 2835 LED - dual chip
- High lumen output, homogenous light
- No visible LED dots
- Material: stainless steel
- Finish: stain nickel
- LED drivers: constant voltage type
- Average lifespan: 25000hrs

ELECTRICAL AND PHOTOMETRIC CHARACTERISTICS

- Input voltage: DC 12V/24V
- Lumen: 180LM
- CRI: 85
- Beam angle: 180°
- Power: 3.6W
- Color temperature: 3000-6000K
- Energy efficiency class: E

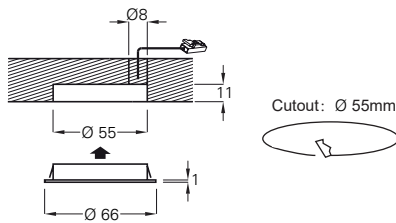
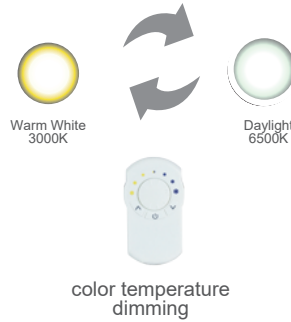
SPECIFICATIONS

MODEL NO.	DESCRIPTION	LIGHT CABLE
CL07TC	1 x LED triangle light	2m lead with mini connector



CL07R-CCT

RECESSED 24 x LED SPOT LIGHT WARM WHITE AND DAY WHITE CHANGING



SPECIFICATIONS

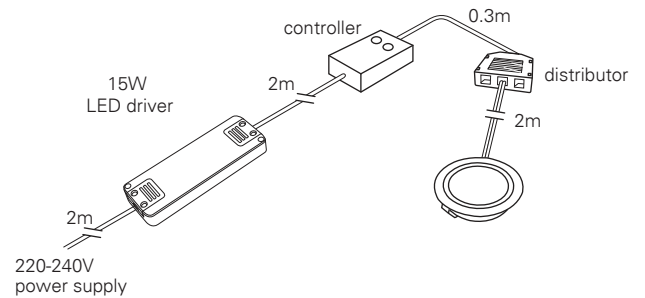
MODEL NO.	DESCRIPTION	LIGHT CABLE
CL07R-CCT	1 x LED spot light	2m lead with mini connector

GENERAL FEATURES

- For recess mounting
- 2 core wire color control solution
- Light source: 2x24 pcs. 2835 LED - dual chip
- High lumen output, homogenous light
- No visible LED dots
- Material: anodized aluminium ring with frosted cover
- Finish: stain nickel / polished chrome / aluminum brush
- LED drivers: constant voltage type
- Average lifespan: 25000hrs

ELECTRICAL AND PHOTOMETRIC CHARACTERISTICS

- Input voltage: DC 12V/24V
- Lumen: 180LM
- CRI: 85
- Beam angle: 120°
- Power: 3.6W
- Color temperature: 3000-6000K
- Energy efficiency class: E



DIFFERENT OPTIONAL MOUNTING RINGS



CL07S-CCT

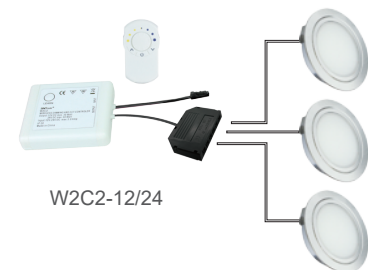


CL07T-CCT



CL07W-CCT

3 x LED SPOT LIGHT KIT



CL15 / CL16 / CL18 / CL19

UNDER CABINET LIGHT ALUMINUM BRUSHED WITH SWITCH (WITH MASTER-SLAVE FUNCTION)



GENERAL FEATURES

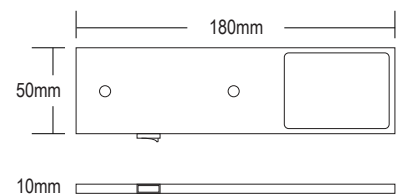
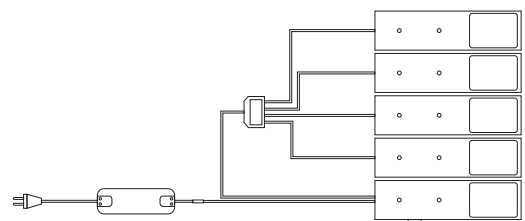
- For surface mounting, screw fixing.
- Slim design, aluminum brushed effect
- DIY type LED connection system, easy installation
- High lumen output, homogenous light
- Frosted cover, no visible LED dots
- Aluminum housing, better for heat emission.
- Finish: aluminum brushed/ black anodized
- LED driver: constant voltage type
- Average lifespan: 25000hrs

ELECTRICAL AND PHOTOMETRIC CHARACTERISTICS

- Input voltage: DC 12/24V
- CRI: 90
- Angle: 120°
- Color temperature: 3000K/4000K/6500K
- Energy efficiency class: E



DIY EASY TO CONNECT



slim design 10mm



SPECIFICATIONS

MODEL NO.	DESCRIPTION	VOLT.	WATT	LUMEN	CONNECTION CABLE
CL15	3 x under cabinet light set with switch	12/24	3x5	400x3	2m 2 x 0.34mm ² input cable and LED mini connector
CL16	5 x under cabinet light set with switch	12/24	5x5	400x5	2m 2 x 0.34mm ² input cable and LED mini connector
CL19	under cabinet light set with switch	12/24	5	400	2m 2 x 0.34mm ² input cable and LED mini connector
CL20	under cabinet light set without switch	12/24	5	400	2m 2 x 0.34mm ² input cable and LED mini connector

UNDER CABINET LIGHT

SOLID PROFILE WITH IR SWITCH(ON/OFF,DIM,CCT)

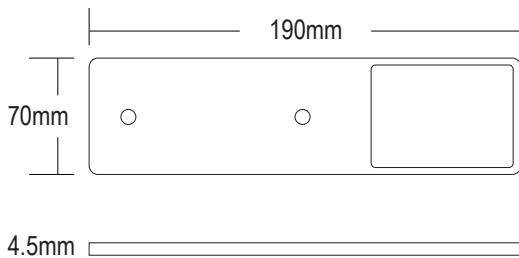


GENERAL FEATURES

- For surface mounting, screw fixing.
- Slim design, aluminum brushed effect
- DIY type LED connection system, easy installation
- Easy to dim, color change and switch lights via hand-waving, touchless switching for kitchen lighting
- High lumen output, homogenous light
- Frosted cover, no visible LED dots, side glowing optional
- Aluminum solid housing, better for heat emission.
- Finish: aluminum brushed/black/white anodized
- LED driver: constant voltage type
- Average lifespan: 25000hrs

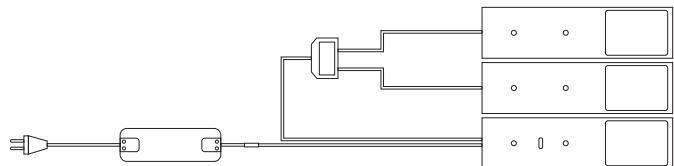
ELECTRICAL AND PHOTOMETRIC CHARACTERISTICS

- Input: DC 12/24V
- Power: 5W
- Lumen: 400lm
- CRI:90
- Angle:120°
- Input voltage: DC 12/24V
- Detection range: 0-50mm
- Color temperature: 3000K/4000K/6000K
- Energy efficiency class:E



slim design 4.5mm

DIY EASY TO CONNECT



MODEL NO.	DESCRIPTION	FINISH
CL17S	with IR switch, DIM + ON/OFF	brushed
CL18B	w/o switch, dimmable	black anodized
CL22W	set(1+2), DIM + ON/OFF	white
CL23S	set(1+4), DIM + ON/OFF	brushed
CL27S	with IR switch, DIM + ON/OFF + CCT	brushed
CL30B	w/o switch, dimmable	black anodized
CL28W	tunable white set(1+2), DIM + ON/OFF + CCT	white
CL29S	tunable white set(1+4), DIM + ON/OFF + CCT	brushed



CL21/CL24/CL25/CL26

UNDER CABINET PANEL LIGHT ALUMINUM BRUSHED WITH IR SWITCH (CCT, DIM, ON/OFF FUNCTION)

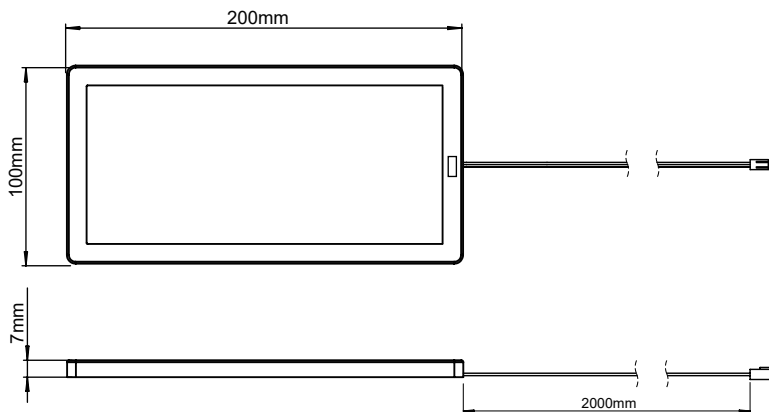


GENERAL FEATURES

- For surface mounting, screw fixing.
- CCT, DIM, ON/OFF function via IR switch
- Slim design, aluminum brushed effect, black or white available
- Magnet points fixing for aluminum frame
- Frosted cover, no side glowing, no visible dots homogenous light, high lumen output
- DIY type LED connection system, easy installation
- LED driver: constant voltage type
- Average lifespan: 25000hrs

ELECTRICAL AND PHOTOMETRIC CHARACTERISTICS

- Input voltage: DC 12V - 24V
- CRI: 90
- Angle: 120°
- Power: 5W
- Lumen: 300Lm
- Color temperature: 3000K/4000K/6500K
- Energy efficiency class: E

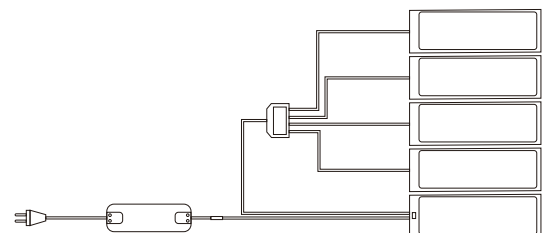


slim design 7mm

DIY EASY TO CONNECT

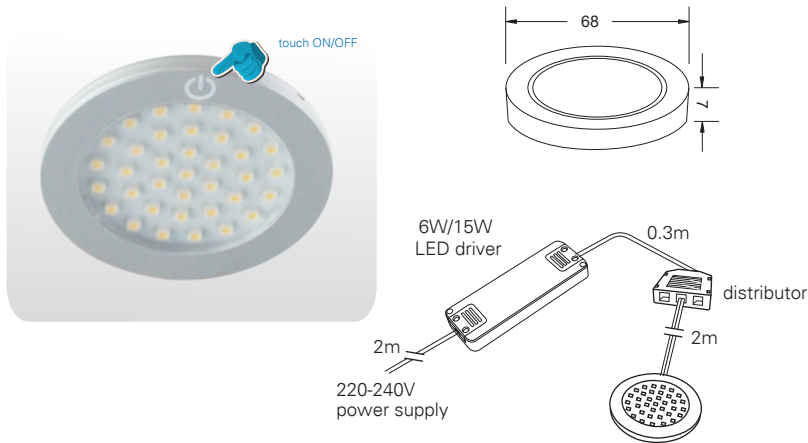
DESCRIPTION

MODEL NO.	DESCRIPTION
CL21	under cabinet panel light with IR switch
CL24	1+2 master-slave set, incl. 20W LED driver
CL25	1+4 master-slave set, incl. 30W LED driver
CL26	under cabinet panel light w/o IR switch



TOUCH01/02

LED UNDERCABINET LIGHT WITH INTEGRATED TOUCH SENSOR



GENERAL FEATURES

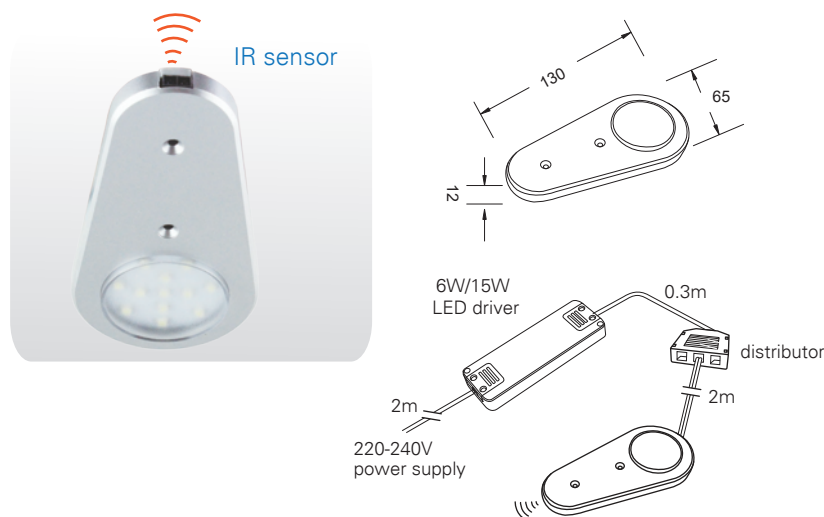
- For surface mounting-screw fixing
- With integrated touch sensor
- Material: ABS+PC
- Finish: silver
- Average lifespan: 25000hrs

ELECTRICAL AND PHOTOMETRIC CHARACTERISTICS

- Input voltage: DC 12V
- Lumen: 140LM / 200LM
- CRI: 80
- Beam Angle: 120°
- Color temperature: 3000-6000K
- Energy efficiency class: E

IR01-12/IR01-21

LED UNDERCABINET WITH INTEGRATED IR SENSOR



GENERAL FEATURES

- For surface mounting-screw fixing
- Adjustable IR sensor detection distance
- Material: ABS+PC
- Finish: silver
- Average lifespan: 25000hrs

ELECTRICAL AND PHOTOMETRIC CHARACTERISTICS

- Input voltage: DC 12V
- Lumen: 90LM / 120LM
- CRI: 80
- PIR detection range: 120° max.1000mm
- Color temperature: 3000-6000K
- Energy efficiency class: E

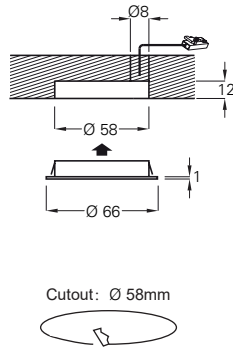
SPECIFICATIONS

MODEL NO.	VOLT.	WATT	LUMEN	LED TYPE	LIGHT CABLE
TOUCH01	DC 12V	2W	140	24x2835LED	2m lead with mini connector
TOUCH02	DC 12V	3W	200	36x2835LED	2m lead with mini connector
IR01-12	DC 12V	0.6W	90	12x3528LED	2m lead with mini connector
IR01-21	DC 12V	1.5W	120	21x3528LED	2m lead with mini connector



IR03

RECESSED LED SPOT LIGHT
INTEGRATED IR SENSOR



GENERAL FEATURES

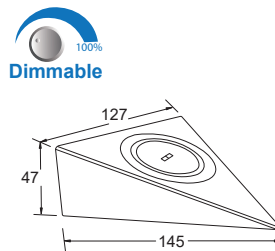
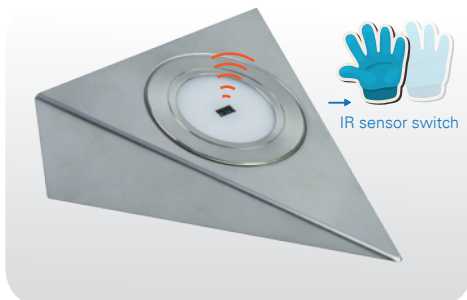
- For recess & surface mounting
- Light source: 12pcs. SMD 2835 LED
- Non-touch IR sensor switch, ON/OFF via one hand-wave, long-stay for dimming
- IR sensor detection range: 5-10cm, prevent unwanted movements be detected.
- No visible LED dots, homogenous light
- Material: anodized aluminium ring with forsted cover
- Finish: satin nickel / polished chrome / aluminum brushed
- LED driver: constant voltage type
- Average lifespan: 25000hrs

ELECTRICAL AND
PHOTOMETRIC CHARACTERISTICS

- Input voltage: DC 12V
- Lumen: 80Lm
- CRI: 80
- Angle: 120°
- Power: 1.5W
- Color temperature: 3000K/4000K/6500K
- Energy efficiency class: E

IR04

STAINLESS STEEL LED TRIANGLE LIGHT
INTEGRATED IR SENSOR



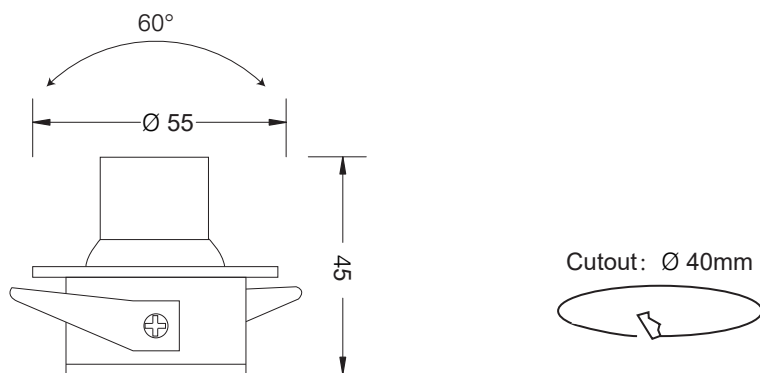
SPECIFICATIONS

MODEL NO.	DESCRIPTION	LIGHT CABLE
IR03	1 x LED spot light	2m lead with mini connector
IR04	1 x LED triangle light	2m lead with mini connector



CB02

RECESSED COB LED SPOT LIGHT WITH SWIVELLING LIGHT HEAD



GENERAL FEATURES

- For recess mounting
- Light source: COB LED
- Swivels by 60° to the right / left, rotates through 360°
- Material: anodized aluminum ring with frosted cover
- Finish: aluminum painting
- LED driver: constant voltage type
- Average lifespan: 25000hrs

ELECTRICAL AND PHOTOMETRIC CHARACTERISTICS

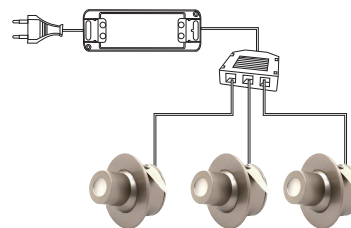
- Input voltage: DC 12V/24V
- Lumen: 100Lm
- CRI: 80
- Angle: 60°
- Power: 2W
- Color temperature: 3000K/4000K/6500K
- Energy efficiency class: E

SPECIFICATIONS

MODEL NO.	DESCRIPTION	WATT	LUMEN	LIGHT CABLE
CB02	1 x LED spot light	2W	100	2m lead with mini connector

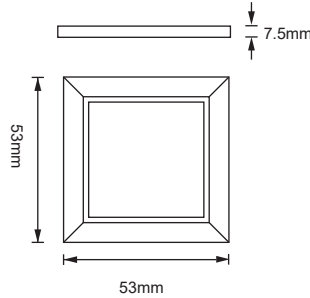
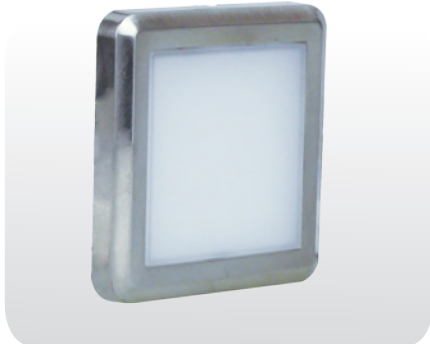


3 x LED SPOT LIGHT KIT



CB03

**SQUARE SURFACE MOUNTED SPOT LIGHT
FROSTED COVER**



GENERAL FEATURES

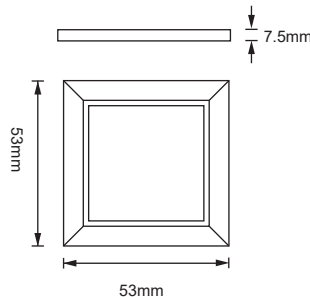
- For surface mounting
- Light source: 16xSMD 3528 LED
- Material: ABS , frosted cover
- Finish: chrome / aluminum coating
- LED driver: constant voltage type
- Average lifespan: 25000hrs

**ELECTRICAL AND
PHOTOMETRIC CHARACTERISTICS**

- Input voltage: DC 12V/24V
- Lumen: 130Lm
- CRI: 80
- Angle: 120°
- Power: 1.5W
- Color temperature: 3000K/4000K/6500K
- Energy efficiency class: E

CB04

**SQUARE SURFACE MOUNTED SPOT LIGHT
CLEAR COVER**



GENERAL FEATURES

- Surface mounting
- Light source: 16pcs. SMD 3528 LED
- Material: ABS , clear cover
- Finish: chrome / aluminum coating
- LED driver: constant voltage type
- Average lifespan: 25000hrs

**ELECTRICAL AND
PHOTOMETRIC CHARACTERISTICS**

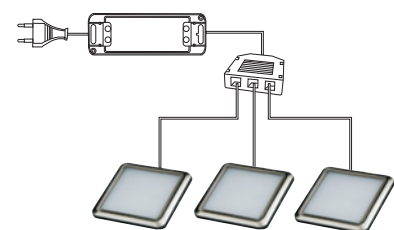
- Input voltage: DC 12V/24V
- Lumen: 150Lm
- CRI: 80
- Angle: 120°
- Power: 1.5W
- Color temperature: 3000K/4000K/6500K
- Energy efficiency class: E

SPECIFICATIONS

MODEL NO.	DESCRIPTION	WATT	LUMEN	LIGHT CABLE
CB03	1 x LED spot light	1.5W	130	2m lead with mini connector
CB04	1 x LED spot light	1.5W	150	2m lead with mini connector

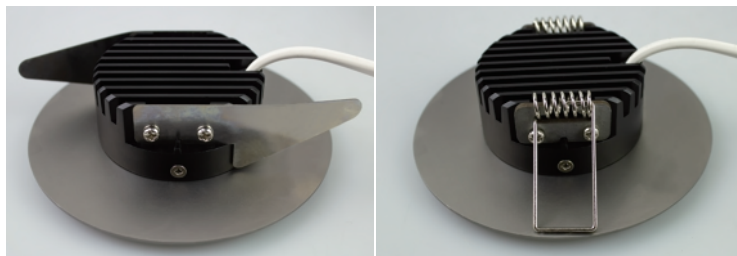


3 x LED SPOT LIGHT KIT



LV06D

LOW VOLTAGE COB SPOT LIGHT

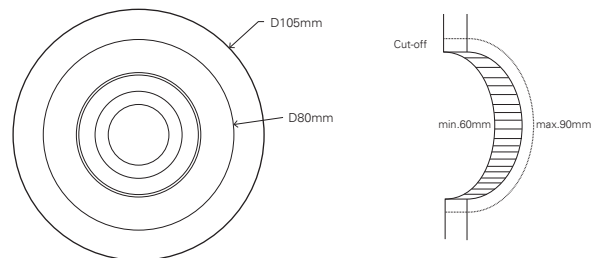
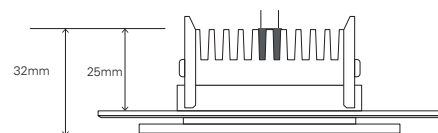


GENERAL FEATURES

- For recessed mounting, extremely simple connection system
- Two spring clips enclosed, the electrician can simply change them via screw drivers for fitting the wide range of cut-off diameters (60-90mm) and tight ceiling / cabinet ceilings heights.
- High lumen output, homogenous light COB Technology, high lumen output, homogenous light
- Material: aluminum casting
- Finish: aluminum brushed, white, black
- Protection class: IP44
- Average lifespan: 50000hrs

ELECTRICAL AND PHOTOMETRIC CHARACTERISTICS

- Input voltage: 27V-42V DC 180mA
- Lumen: 600Lm
- Power: 8W
- Dimmable: yes
- CRI: 90
- Angle: 120°
- Color temperature: 3000K/4000K/6500K
- Energy efficiency class: E

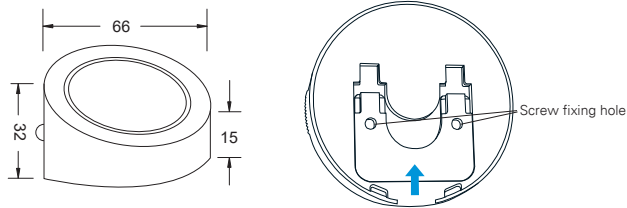
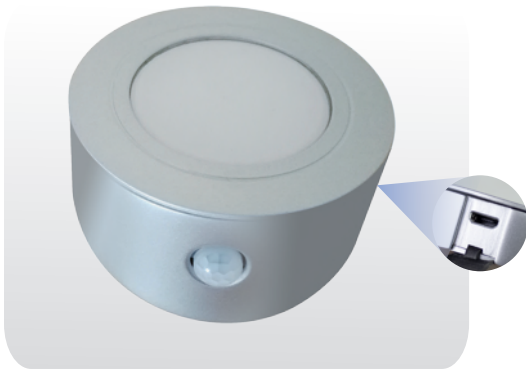


SPECIFICATIONS

MODEL NO.	BEZEL	VOLT.	WATT	LUMEN	LIGHT CABLE
LV06D	Round	27-42V	8W	600	2m lead with fast connector

PIR06

RECHARGEABLE ANGLED LED SPOT LIGHT
PIR 3.7V 500MA 60LM



GENERAL FEATURES

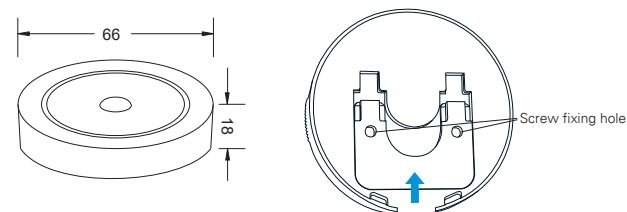
- For angled surface mounting-with fixing holder , easy installation and dismantle
- With an integrated PIR sensor
- Energy-saving
- Contains a rechargeable Lithium-ion battery. No electrical installation required
- Rechargeable via a pluggable USB charger as option
- Additional ON/OFF/AUTO switch for optional use
- Housing color option: black and silver

ELECTRICAL AND PHOTOMETRIC CHARACTERISTICS

- Lithium-ion battery: 3.7V 500mAh
- Input port : 5V Micro USB
- Lumen: 60Lm
- Working time: 60s±5s
- CRI: 80
- Angle: 120°
- Detection range: 2-5m
- Power: 1W
- Color temperature: 3000K/4000K/6500K
- Energy efficiency class: E

PIR07

RECHARGEABLE LED SPOT LIGHT
PIR 3.7V 500MA 60LM



GENERAL FEATURES

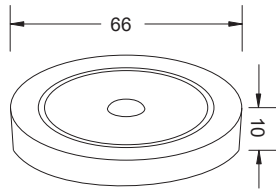
- For surface mounting-with fixing holder, easy installation and dismantle
- With an integrated PIR sensor
- Energy-saving
- Contains a rechargeable Lithium-ion battery. No electrical installation required
- Rechargeable via a pluggable USB charger as option
- Additional ON/OFF/AUTO switch for optional use
- Housing color option: black and silver

ELECTRICAL AND PHOTOMETRIC CHARACTERISTICS

- Lithium-ion battery: 3.7V 500mAh
- Input port : 5V Micro USB
- Lumen: 60Lm
- Working time: 60s±5s
- CRI: 80
- Angle: 120°
- Detection range: 2-5m
- Power: 1W
- Color temperature: 3000K/4000K/6500K
- Energy efficiency class: E

PIR08

LED UNDER CABINET LIGHT WITH PIR SENSOR



GENERAL FEATURES

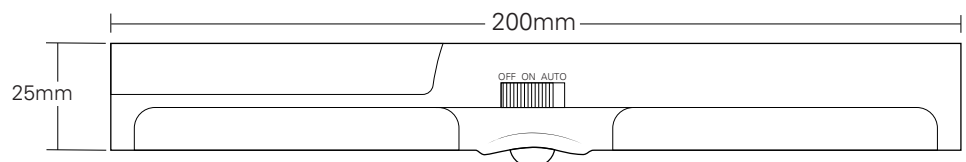
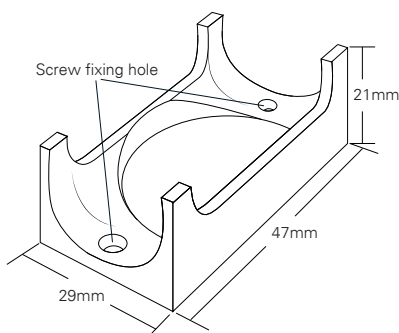
- For surface mounting-screw fixing
- With an integrated PIR sensor
- Energy-saving
- Material: PC
- Finish: silver
- LED drivers: constant voltage type
- Average lifespan: 25000hrs

ELECTRICAL AND PHOTOMETRIC CHARACTERISTICS

- Input voltage: DC 12V
- Lumen: 120Lm
- Working time: 60s±5s
- CRI: 80
- Angle: 120°
- Detection range: 0-5m
- Power: 2W
- Color temperature: 3000K/4000K/6500K
- Energy efficiency class: E

PIR09

BATTERY OPERATED UNDER CABINET LIGHT WITH MOTION + BRIGHTNESS SENSOR



GENERAL FEATURES

- For surface mounting-with fixing holder , easy installation and dismantle
- With an integrated PIR and CDS sensor : the light will only light up in a dark environment, regardless if people walk by or not.Energy-saving solution
- 3X AA battery operated. No electrical installation required
- Big emission angle, homogenous light
- ON/OFF/AUTO switch for optional use
- Housing color option: white, black and silver

ELECTRICAL AND PHOTOMETRIC CHARACTERISTICS

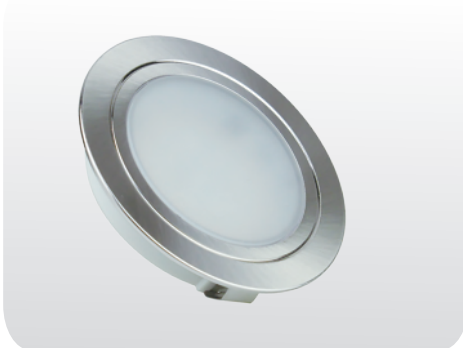
- Battery: AA1.5V x 3PCS (not included)
- Input Voltage : 4.5V
- Lumen: 50Lm
- Working time: 60s±5s each detected movement
- AUTO-OFF : 1 minute if no movement detected
- CRI: 80
- Detection Angle: 100°-120°
- Detection range: 3-5m
- Power: 1W
- Color temperature: 3000K/4000K/6500K
- Energy efficiency class: E

HIGH VOLTAGE SPOT LIGHTING ►



HV02R

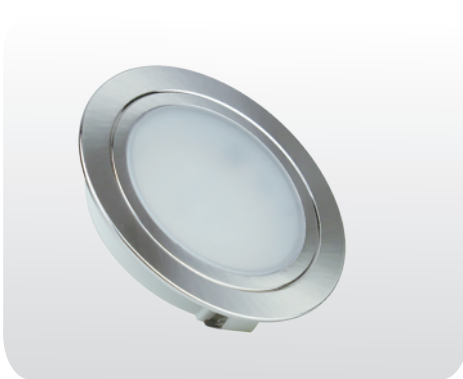
**MAINS RECESSED LED SPOT LIGHT
HIGH LUMEN OUTPUT WITH DIFFUSER
INVISIBLE LED DOTS**



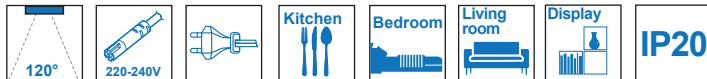
same size as CL02R / CL07R

HV02D

**MAINS RECESSED LED SPOT LIGHT
HIGH LUMEN OUTPUT WITH DIFFUSER
INVISIBLE LED DOTS, DIMMABLE**



same size as CL02R / CL07R



SPECIFICATIONS

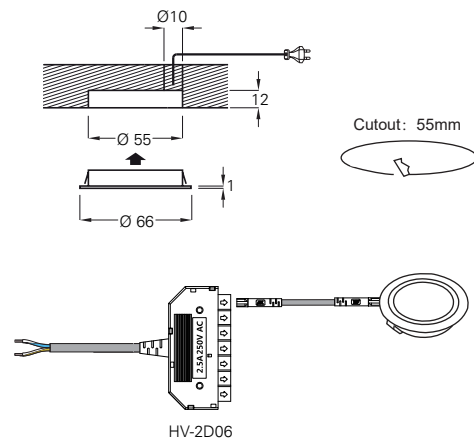
MODEL NO.	VOLT.	WATT	LUMEN	LIGHT CABLE
HV02R/HV02D	220-240	3W	190	2m lead with HV connector
HV02R/HV02Dx3	220-240	3Wx3	190x3	2m lead with 6 way distributor

GENERAL FEATURES

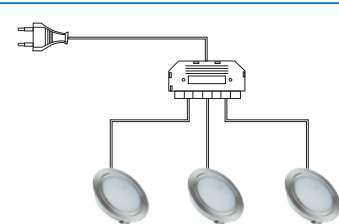
- For recessed mounting extremely simple connection system
- Light source: 24 pcs. SMD 2835 LED
- High lumen output, homogenous light
- No visible LED dots
- Material: plastic housing with frost cover
- Finish: satin nickel / polished chrome / aluminum brushed
- LED driver not required
- Average lifespan: 50000hrs

ELECTRICAL AND PHOTOMETRIC CHARACTERISTICS

- Input voltage: AC 220-240V
- Lumen: 190Lm(HV02R) / 180Lm(HV02D-3000K) / 200Lm(HV02D-4000K)
- CRI: 80
- Angle: 120°
- Power: 3W
- Color temperature: 3000K/4000K/6500K
- Energy efficiency class: E



DIY KIT



DIFFERENT OPTIONAL MOUNTING RINGS



HV02S



HV02SL



HV02T



HV02W

HV03R

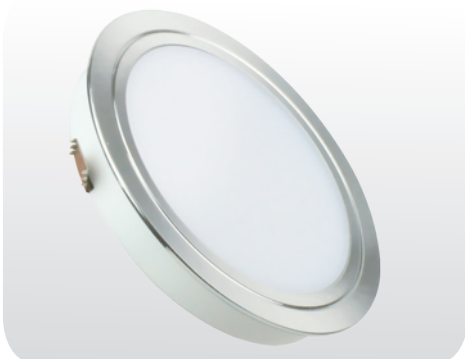
**MAIN RECESSED LED SPOT LIGHT
HIGH LUMEN OUTPUT WITH DIFFUSER
INVISIBLE LED DOTS**



super slim at 11.5mm only

HV03D

**MAINS RECESSED LED SPOT LIGHT
HIGH LUMEN OUTPUT WITH DIFFUSER
INVISIBLE LED DOTS, DIMMABLE**



same size as CL13R



SPECIFICATIONS

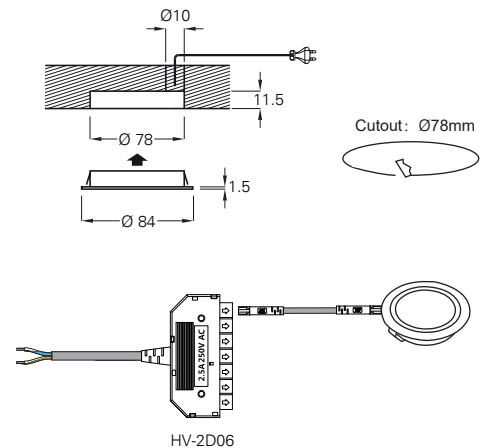
MODEL NO.	VOLT.	WATT	LUMEN	LIGHT CABLE
HV03R/HV03D	220-240	5W	350	2m lead with HV connector
HV03R/HV03Dx3	220-240	5Wx3	350x3	2m lead with 6 way distributor

GENERAL FEATURES

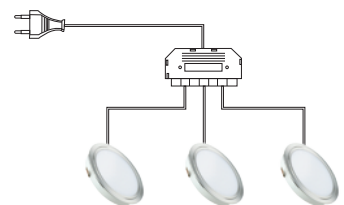
- For recessed mounting extremely simple connection system
- Light source: 74pcs. SMD 2835 LED
- High lumen output, homogenous light
- No visible LED dots
- Material: plastic housing with frost cover
- Finish: satin nickel / polished chrome / aluminum brushed
- LED driver not required
- Average lifespan: 50000hrs

ELECTRICAL AND PHOTOMETRIC CHARACTERISTICS

- Input voltage: AC 220-240V
- Lumen: 350Lm(HV03R) / 260Lm(HV03D)
- CRI: >80
- Angle: 120°
- Power: 5W(HV03R) / 5.5W(HV03D)
- Color temperature: 3000K/4000K/6500K
- Energy efficiency class: E



DIY KIT



DIFFERENT OPTIONAL MOUNTING RINGS



HV03S



HV03SL



HV03T



HV03W

HV05R

**MAIN RECESSED LED SPOT LIGHT
HIGH LUMEN OUTPUT WITH DIFFUSER
INVISIBLE LED DOTS**



super slim at 11.5mm only

HV05D

**MAINS RECESSED LED SPOT LIGHT
HIGH LUMEN OUTPUT WITH DIFFUSER
INVISIBLE LED DOTS, DIMMABLE**



same size as CL12R



SPECIFICATIONS

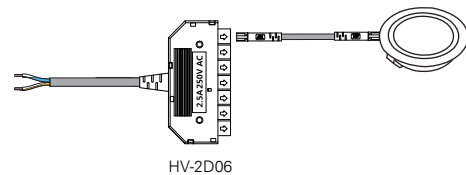
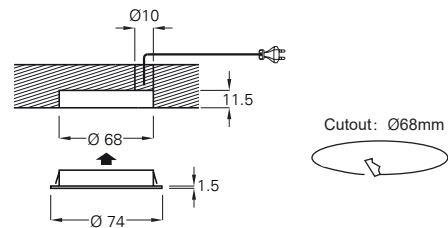
MODEL NO.	VOLT.	WATT	LUMEN	LIGHT CABLE
HV05R/HV05D	220-240	4.5W	260	2m lead with HV connector
HV05R/HV05Dx3	220-240	4.5Wx3	260x3	2m lead with 6 way distributor

GENERAL FEATURES

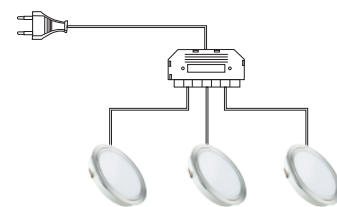
- For recessed mounting extremely simple connection system
- Surface mounting ring optional
- Light source: 71pcs. SMD 2835 LED
- High lumen output, homogenous light
- No visible LED dots
- Material: plastic housing with frost cover
- Finish: satin nickel / polished chrome / aluminum brushed
- LED driver not required
- Average lifespan: 50000hrs

ELECTRICAL AND PHOTOMETRIC CHARACTERISTICS

- Input voltage: AC 220-240V
- Lumen: 260Lm(HV05R) / 230Lm(HV05D)
- CRI: >80
- Angle: 120°
- Power: 4.5W
- Color temperature: 3000K/4000K/6500K
- Energy efficiency class: E



DIY KIT



DIFFERENT OPTIONAL MOUNTING RINGS



HV05S



HV05SL



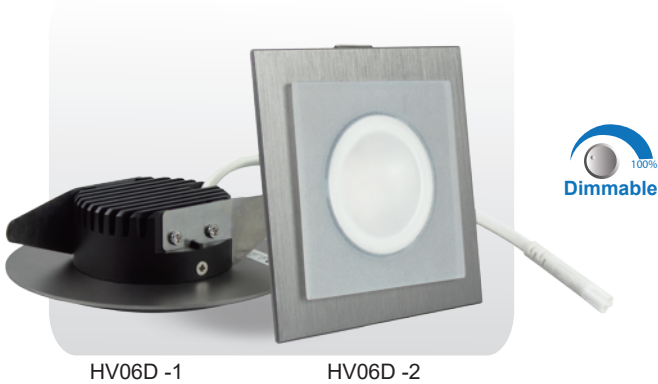
HV05T



HV05W

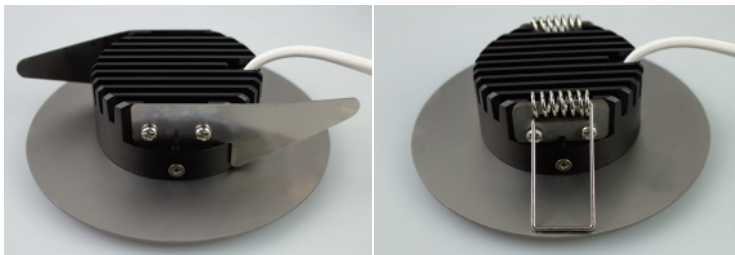
HV06D -1/ HV06D -2

HIGH VOLTAGE DIMMABLE SPOT LIGHT



HV06D -1

HV06D -2



SPECIFICATIONS

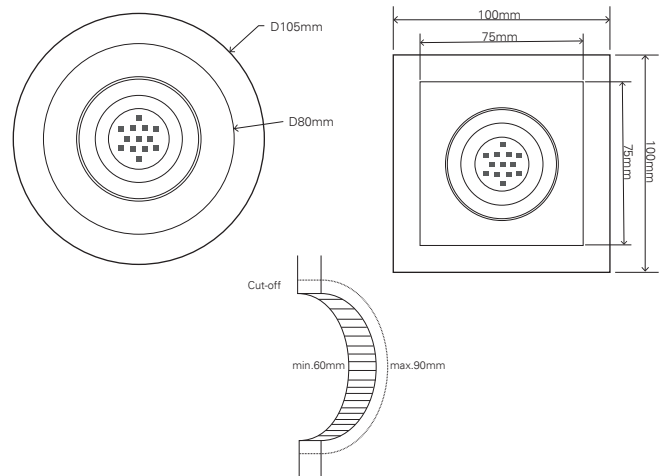
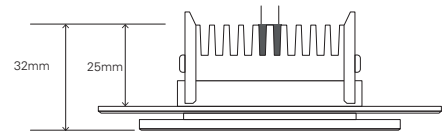
MODEL NO.	BEZEL	VOLT.	WATT	LUMEN	LIGHT CABLE
HV06D -1	Round	230-250	6W	400	2m lead with HV connector
HV06D -2	Square	230-250	6W	400	2m lead with HV connector

GENERAL FEATURES

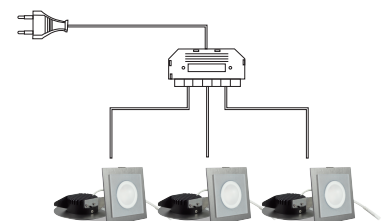
- For recessed mounting, extremely simple connection system
- Two spring clips enclosed, the electrician can simply change them via screw drivers for fitting the wide range of cut-off diameters (60-90mm) and tight ceiling / cabinet ceilings heights.
- High lumen output, homogenous light
- No visible LED dots, side glowing
- Material: aluminum casting
- Finish: aluminum brushed, white, black
- Protection class: IP44
- LED driver not required
- Average lifespan: 50000hrs

ELECTRICAL AND PHOTOMETRIC CHARACTERISTICS

- Input voltage: AC 230-250V
- Lumen: 400Lm
- Power: 6W
- Dimmable: yes
- CRI: 90
- Angle: 120°
- Color temperature: 3000K/4000K/6500K
- Energy efficiency class: E



DIY KIT



HV08R

HIGH VOLTAGE RECESSED ROTATABLE SPOTLIGHT

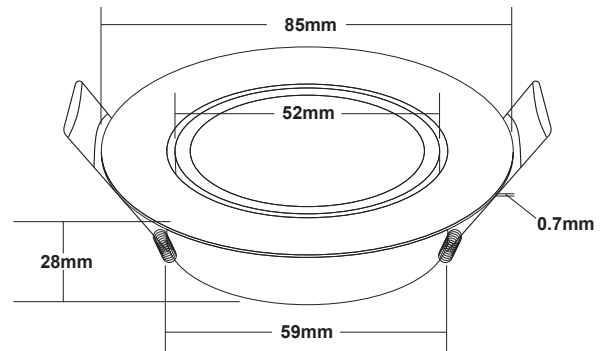


GENERAL FEATURES

- High lumen output
- LED driver not required
- Swivelable and rotatable
- Material: iron sheet
- Finish: satin nickel / black / white
- With 15cm cable
- Average lifespan: 50000hrs
- CE, RoHS, IP23

ELECTRICAL AND PHOTOMETRIC CHARACTERISTICS

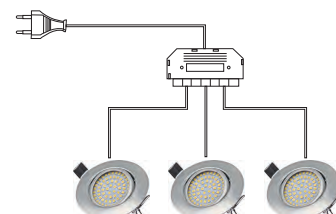
- Input voltage: AC 220-240V
- Lumen: 240Lm
- CRI: >80
- Angle: 120°
- Power: 4W
- Non-dimmable
- Color temperature: 3000K/4000K/6000K
- Energy efficiency class: E



SPECIFICATIONS

MODEL NO.	VOLT.	WATT	LUMEN	LIGHT CABLE
HV08R	220-240	4W	240	15cm lead with HV connector

DIY KIT

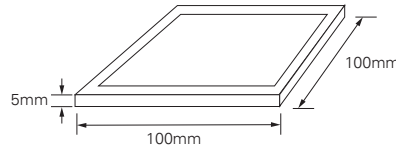


PANEL AND STRIP LIGHTING



PV100/P100

PV100 VARIABLE MINI PANEL LIGHT
P100 SINGLE COLOUR MINI PANEL LIGHT



SATIN NICKEL / CHROME / WHITE PAINTED METAL FRAME

GENERAL FEATURES

- Ultra thin panel LED light, 8mm only
- Side glowing
- Homogeneous light output
- For surface mounting-screw fixing
- Material: translucent plastic
- Average lifespan: 50000hrs

ELECTRICAL AND PHOTOMETRIC CHARACTERISTICS

- Input voltage: DC12V / 24V constant voltage
- Lumen: 250Lm
- CRI: 80
- Diffuser
- Power: 5W
- Color temperature: 3000K - 6000K
- Energy efficiency class: E



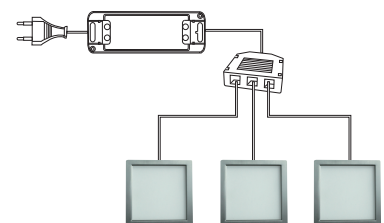
DECORATION METAL FRAME WITH BRUSHED SATIN NICKEL FINISH TO COVER THE SCREW HOLES

SPECIFICATIONS

MODEL NO.	DESCRIPTION	PRODUCT SIZE	VOLT.	WATT	LUMEN
P100	single colour mini panel light	100x100x5mm	12/24	5W	250

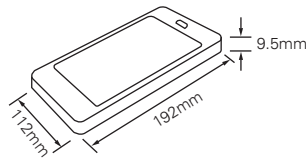


DIY KIT



LPAD-IR

**LED PANEL LIGHT WITH IR SENSOR
IPAD SHAPE**



GENERAL FEATURES

- For surface mounting-screw fixing
- Light source: 36pcs. SMD 2835 LED
- Homogeneous illumination, big lighting area
- Non-touch IR sensor switch, ON/OFF via one hand-wave, long-stay for dimming
- IR sensor detection range: 5-10cm, prevent unwanted movements be detected
- Master-slave system available
- Material: metal+ABS with frosted diffuser
- Finish: silver
- LED driver: constant voltage type
- Average lifespan: 25000hrs

ELECTRICAL AND PHOTOMETRIC CHARACTERISTICS

- Input voltage: DC 12/24V
- Lumen: 400-450Lm
- CRI: 80
- Angle: 120°
- Power: 6W
- Color temperature: 3000K/4000K/6500K
- Energy efficiency class: E

LPAD-PIR

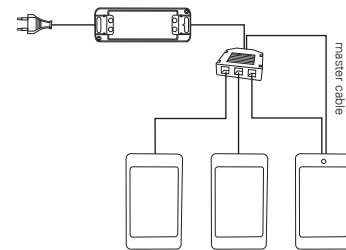
**LED PANEL LIGHT
IPAD SHAPE**



ELECTRICAL AND PHOTOMETRIC CHARACTERISTICS

- Detection range: 2.5m
- Working time: 30sec.

MASTER-SLAVE SYSTEM



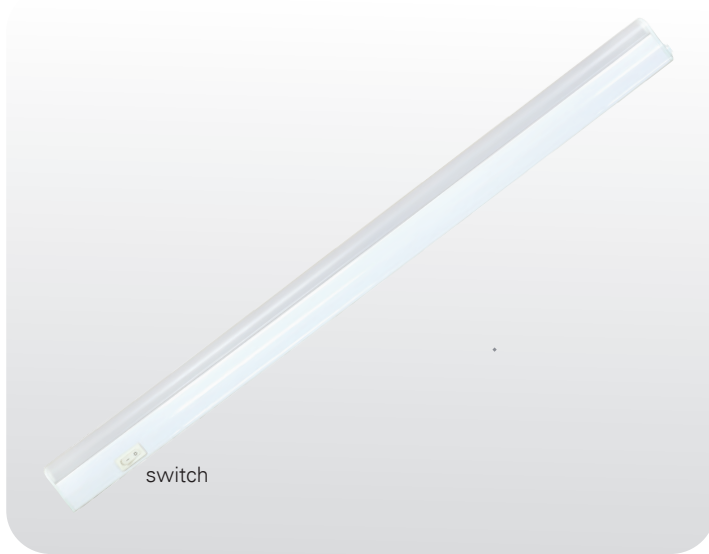
SPECIFICATIONS

MODEL NO.	DESCRIPTION	LIGHT CABLE
LPAD-IR	1 x LED panel light	2m lead with mini connector
LPAD	1 x LED panel light	2m lead with mini connector
LPAD-3MS	3 x LED spot light-master slave	2m lead with mini connector
LPAD-PIR	3 x LED spot light-master slave	2m lead with mini connector



ST07

T5 LED LINKABLE STRIP LIGHT

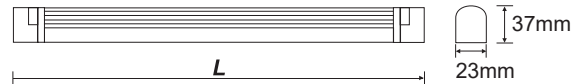


GENERAL FEATURES

- Super brilliant and low energy consumption
- Strip light with intergral switch
- For surface mounting
- With 1.5m mains lead
- With 0.15m interconnecting lead
- Material: anodized aluminium with diffuser
- Average lifespan: 35000hrs

ELECTRICAL AND PHOTOMETRIC CHARACTERISTICS

- Input voltage: AC 100-240V 50/60Hz
- Lumen: 100Lm/W
- CRI: 80
- Diffuser
- Color temperature: 3000K/4000K/6500K
- Energy efficiency class: E



T5 LINK LEAD



LINK LEAD

T5LL250	250mm link lead
T5LL500	500mm link lead
T5LL1000	1000mm link lead

REWIREABLE CONNECTOR



CONNECTOR

T5RWP	Rewireable plug
T5RWS	Rewireable socket

CORNER CONNECTOR



CONNECTOR

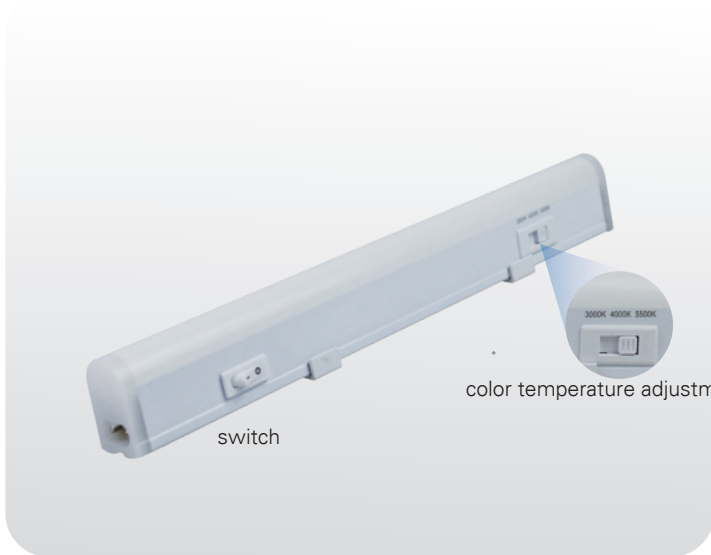
T5CC	Corner connector
-------------	------------------

SPECIFICATIONS

MODEL NO.	OPERATING VOLT.	THE POWER OF THE WHOLE LIGHT	LED WATT	EQUIVALENT CFL LIGHT	PF	PRODUCT SIZE	QTY OF LEDS	LED TYPE	LUMEN OUTPUT
ST07-6	220-240V 50-60Hz	4W	3W	6W	0.5	222x23x37	18	SMD 2835	360
ST07-8	220-240V 50-60Hz	6.4W	5.4W	8W	0.5	296x23x37	30	SMD 2835	500
ST07-13	220-240V 50-60Hz	9.5W	8.6W	13W	0.5	525x23x37	48	SMD 2835	800
ST07-21	220-240V 50-60Hz	17W	15.1W	21W	0.5	904x23x37	84	SMD 2835	1500
ST07-28	220-240V 50-60Hz	19.5W	17.3W	28W	0.5	1157x23x37	86	SMD 2835	1920

ST09

T5 TRIPLE COLOR TEMPERATURE LINKABLE STRIP LIGHT

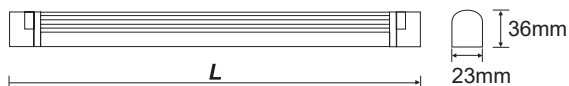


GENERAL FEATURES

- Super brilliant and low energy consumption
- White fitting, with opal diffuser
- For surface mounting
- With on/off switch, with CCT switch
- With power cable H03VVH2-F, 2 x 0.75mm²
- Material: Plastic
- Average lifespan: 35000hrs

ELECTRICAL AND PHOTOMETRIC CHARACTERISTICS

- Input voltage: AC 220-240V 50/60Hz
- Lumen: 80Lm/W
- CRI: 80
- Diffuser
- Color temperature: 3000K/4000K/6500K
- Energy efficiency class: E



T5 LINK LEAD



LINK LEAD	
T5LL250	250mm Link lead
T5LL500	500mm Link lead
T5LL1000	1000mm Link lead

REWIREABLE CONNECTOR



CONNECTOR	
T5RWP	Rewireable plug
T5RWS	Rewireable socket

CORNER CONNECTOR



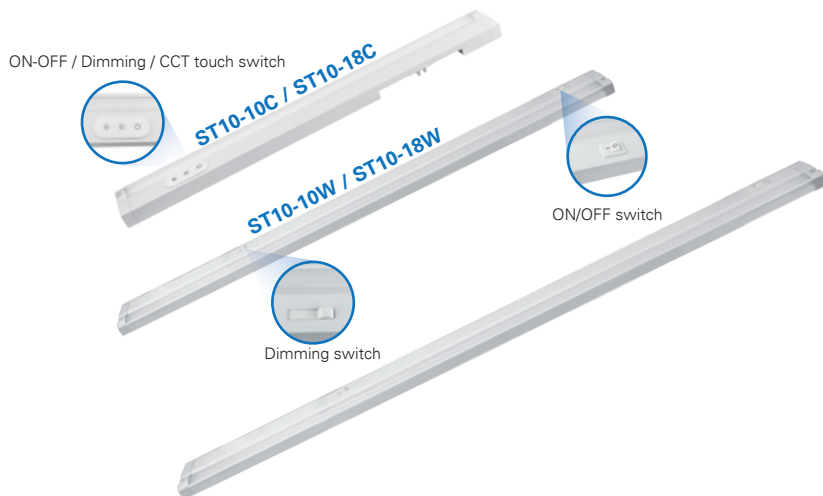
CONNECTOR	
T5CC	Corner connector

SPECIFICATIONS

MODEL NO.	OPERATING VOLT.	THE POWER OF THE WHOLE LIGHT	Beam Angel	Lumen	PRODUCT SIZE	Max.connection Qty
ST09/280	220-240V 50Hz	4W	105°	3000K-300Lm 4000K-380Lm 5000K-300Lm	280x23x36	55pcs
ST09/540	220-240V 50Hz	9W	105°	3000K-750Lm 4000K-800Lm 5000K-750Lm	540x23x36	25pcs
ST09/840	220-240V 50Hz	13W	105°	3000K-1050Lm 4000K-1200Lm 5000K-1050Lm	840x23x36	17pcs
ST09/1140	220-240V 50Hz	18W	105°	3000K-1550Lm 4000K-1600Lm 5000K-1550Lm	1140x23x36	12pcs
ST09/1440	220-240V 50Hz	24W	105°	3000K-1800Lm 4000K-2000Lm 5000K-1800Lm	1440x23x36	10pcs

ST10-10W / ST10-18W / ST10-10C / ST10-18C

LINKABLE STRIP LIGHT WITH DIMMING SLIDING SWITCH

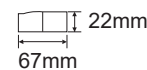
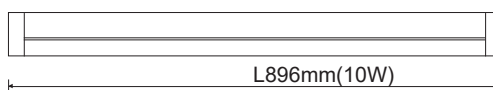
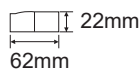
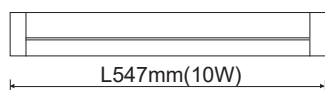


GENERAL FEATURES

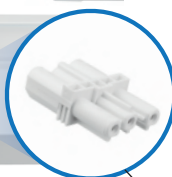
- Power cable connection from rear possible
- Easy installation with screws from front side for surface mounting
- Super brilliant and low energy consumption
- White fitting, with opal diffuser
- With on/off switch, with dimming switch
- With power cable H05VVf 3x0.75mm²
- Material: Aluminium and Plastic
- Average lifespan: 35000hrs
- LED: 48pcs x 2835 SMD LED(10W)
84pcs x 2835 SMD LED(18W)
- Linkable plug/socket/USB module available

ELECTRICAL AND PHOTOMETRIC CHARACTERISTICS

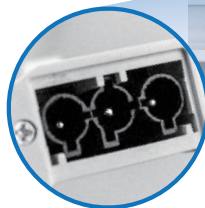
- Input voltage: AC 220-240V 50/60Hz
- Lumen: 600Lm(10W) / 1000Lm(18W)
800Lm(10W) / 1550Lm(18W)
- CRI: 80
- Diffuser
- Power: 10W / 18W
- Color temperature: 3000K/4000K
3000K-4000K-6500K
- Energy efficiency class: E



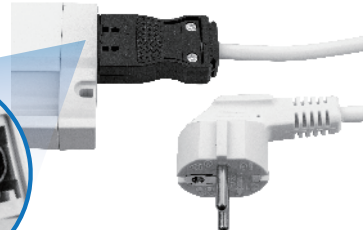
Screw fixing



Max.10pcs interconnected.



Straight connector optional



ST10-10W / ST10-18W
□ max.1.5mm²



ST10-10C / ST10-18C
□ max.2.5mm²



LINK LEAD



POWER CABLES

Connection from rear

SPECIFICATIONS

MODEL NO.	FUNCTION	POWER	LUMEN	PRODUCT SIZE
ST10-10W	ON/OFF/Dimming	10W	600Lm	547x22x62mm
ST10-18W	ON/OFF/Dimming	18W	1000Lm	896x22x67mm
ST10-10C	ON/OFF/Dimming/CCT	10W	800Lm	547x22x62mm
ST10-18C	ON/OFF/Dimming/CCT	18W	1550Lm	896x22x67mm



BL01



on/off switch

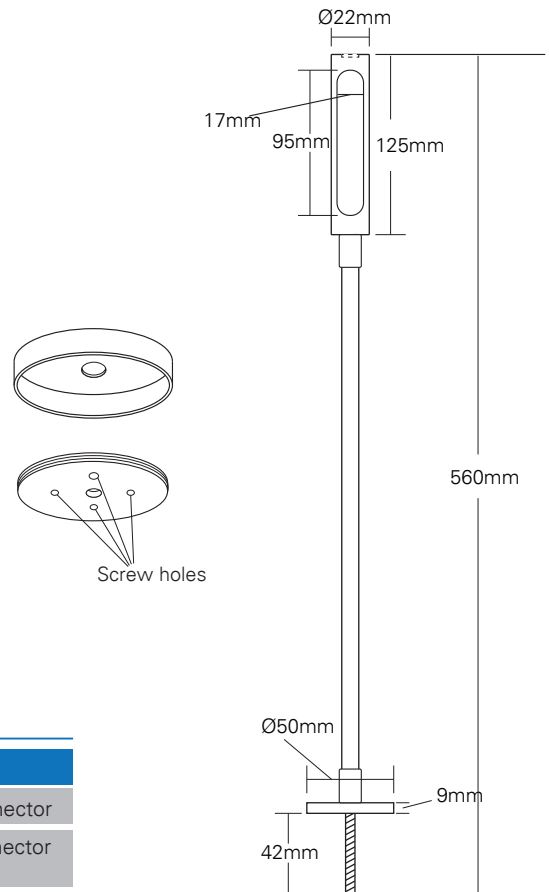


GENERAL FEATURES

- For surface mounting-screw fixing
- The 30cm flexible arm makes it simple to adjust the position of the light.
- The fitting has a small push switch on the end of the light head, making it simple to switch the light on/off as required.
- Light source: SMD LED
- Material: steel
- Finish: satin nickel
- LED driver: constant voltage type
- Average lifespan: 25000hrs

ELECTRICAL AND PHOTOMETRIC CHARACTERISTICS

- Input voltage: DC 12V
- Lumen:120Lm
- CRI: 80
- Angle: 120°
- Power: 2.5W
- Color temperature: 3000K/4000K/6500K
- Energy efficiency class: E



SPECIFICATIONS

MODEL NO.	VOLT.	WATT	LUMEN	LIGHTENING CABLE
BL01	DC12V	2.5W	120	2m 2x0.75mm ² cable with LV connector
BL01x2	DC12V	2.5Wx2	120x2	2m 2x0.75mm ² cable with LV connector + plug in LED driver

BL03

TOUCH SWITCH WITH 3 LEVELS BRIGHTNESS ADJUSTABLE

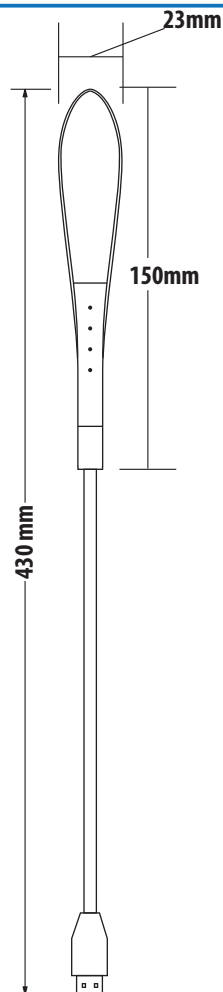


GENERAL FEATURES

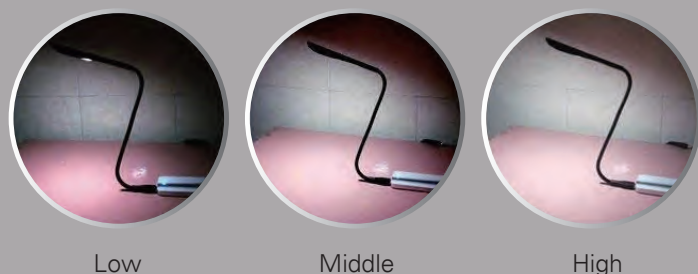
- Touch Switch with 3 Levels Brightness Adjustable - Low is ideal as a night light plug in your bed beside, Medium is right for using as a laptop lamp, High level is suitable for reading or studying.
- Eye Protection Soft Light- Eye protected non-flickering led beads soft light is ideal for your reading.
- 360 Degrees Rotating Flexible Metal Bellow with Silicone Cover - Adjust the height and angle which is the most suitable for you.
- Portable USB Powered - This compact usb lamp is compatible for all usb ports. power bank, usb charger, laptop usb port, mobile phone adapter, car usb, etc

ELECTRICAL AND PHOTOMETRIC CHARACTERISTICS

- Function: On/Off and low-middle-high 14 LED
- Color: Gray, Black, White
- Material: ABS and rubber
- Product size: 400mm
- Weight: 46g
- Lm: 30-90
- Power: 2W
- Energy efficiency class: E



Three gears move light



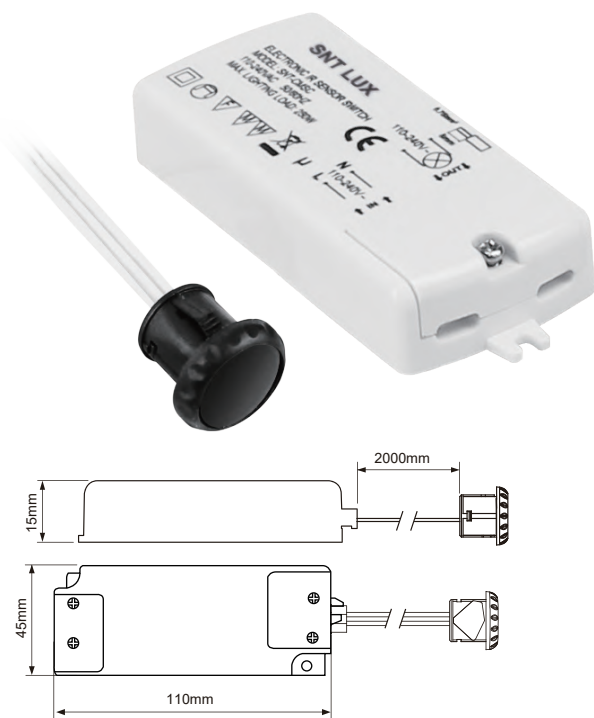
LIGHTING SYSTEMS

(CONTROLS & ACCESSORIES)



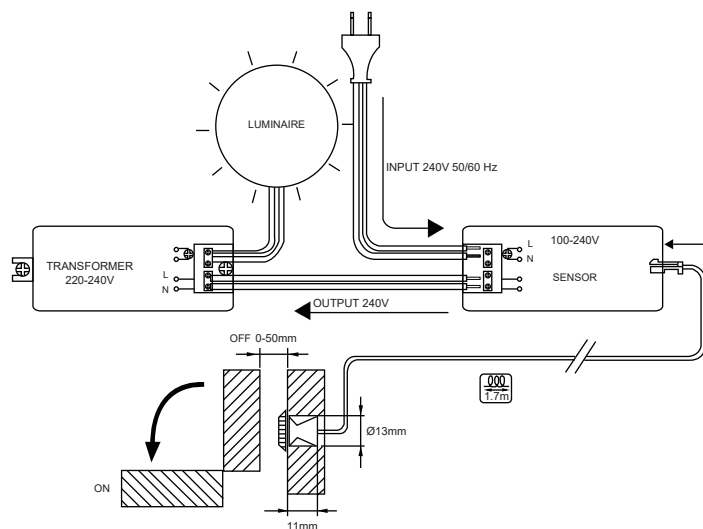
SNT-CMSC

MOTION DETECTION SENSOR FOR DOOR



GENERAL FEATURES

- Detection range: less than 5cm
- ON/OFF via the opening and closing of the door



SNT-CMS2

MOTION DETECTION WITH DUAL SENSOR



Surface mounting bracket optional
Special sensor head against sunshine optional

Sensor	Size
	D1: 17mm
	D2: 13mm
	L: 11mm



SPECIFICATIONS

MODEL NO.	RATED INPUT VOLT.	RATED OUTPUT VOLT.	RATED CURRENT	RATED LOAD
SNT-CMSC	AC100-240	AC100-240	max. 1A	max. 250W
SNT-CMS2	AC100-240	AC100-240	max. 1A	max. 500W



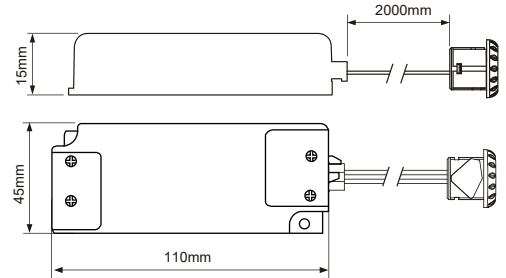
SNT-CMS

MOTION DETECTION SENSOR

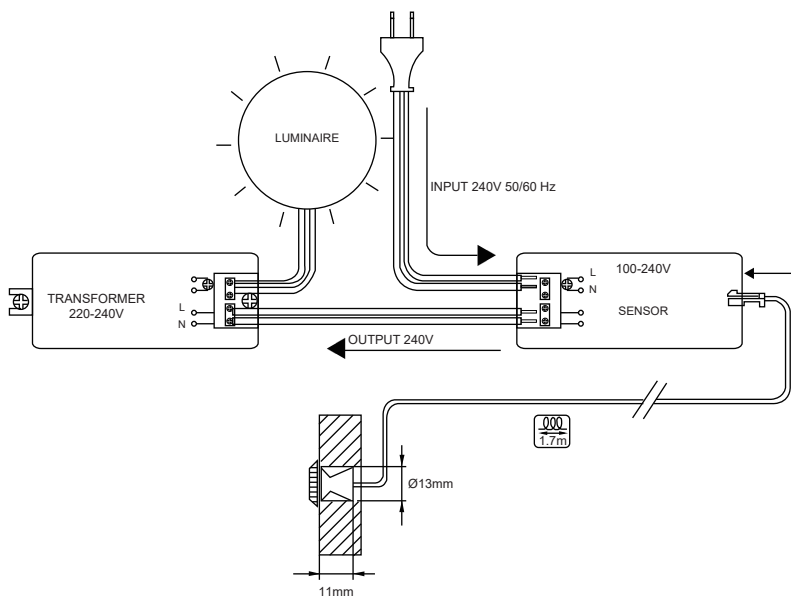


GENERAL FEATURES

- Detection range: less than 5cm
- ON/OFF via hand motion



APPLICATION



Sensor	Size
	D1: 17mm
	D2: 13mm
	L: 11mm



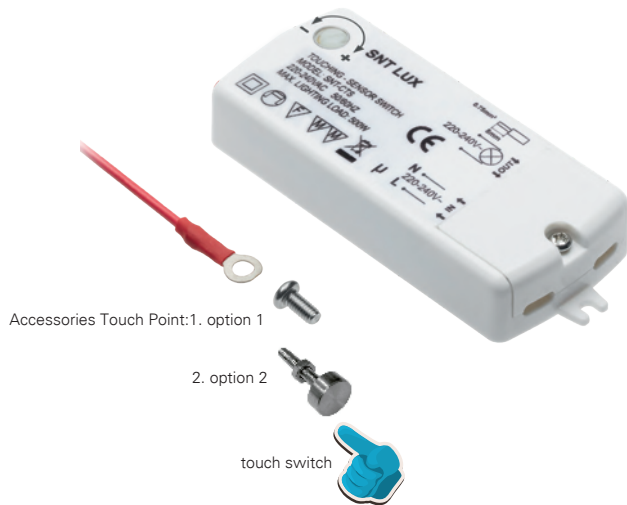
SPECIFICATIONS

MODEL NO.	RATED INPUT VOLT.	RATED OUTPUT VOLT.	RATED CURRENT	RATED LOAD
SNT-CMS	AC100-240	AC100-240	max. 1A	max. 250W



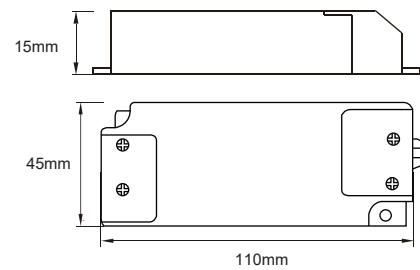
SNT-CTS

TOUCH ON/OFF SWITCH

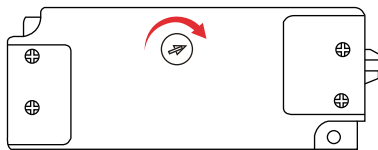


GENERAL FEATURES

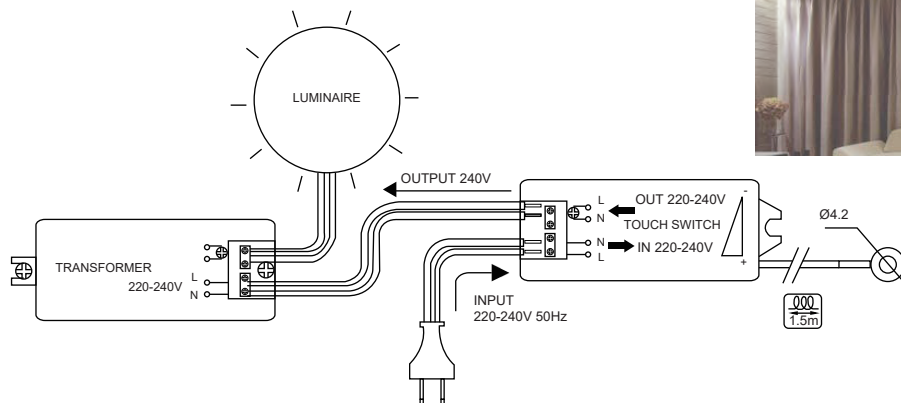
- Touch sensitivity adjustable
- Touch to switch on
- Touch again to switch off



APPLICATION



Turn knob clockwise to set sensitivity from high to low



SPECIFICATIONS

MODEL NO.	RATED INPUT VOLT.	RATED LOAD	RATED CURRENT	RATED LOAD
SNT-CTS	220-240~50Hz	500W	max. 2A	max. 250W



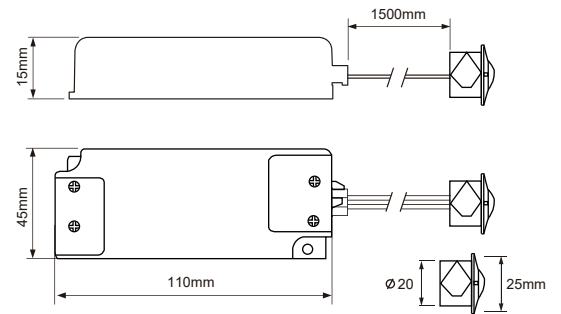
SNT-CPIR

PIR MOTION SENSOR SWITCH

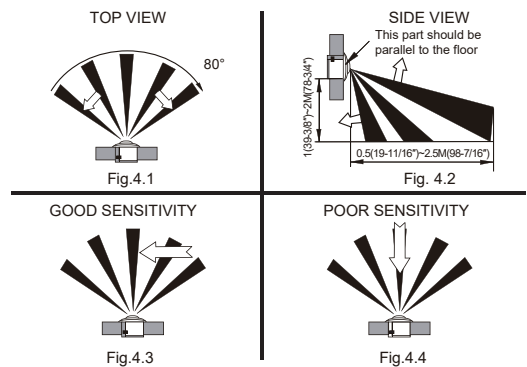
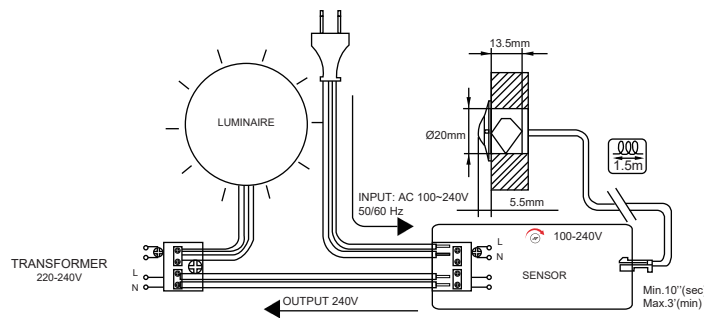


GENERAL FEATURES

- Body motion detection sensor
- Detection range: max. 2.5m
- Detection angle: 80°
- Lighting time: 10 sec.- 3 min.



APPLICATION



SPECIFICATIONS

MODEL NO.	RATED INPUT VOLT.	RATED OUTPUT VOLT.	RATED CURRENT	RATED LOAD
SNT-CPIR	AC100-240	AC100-240	max. 1A	max. 250W



SNT-IRS

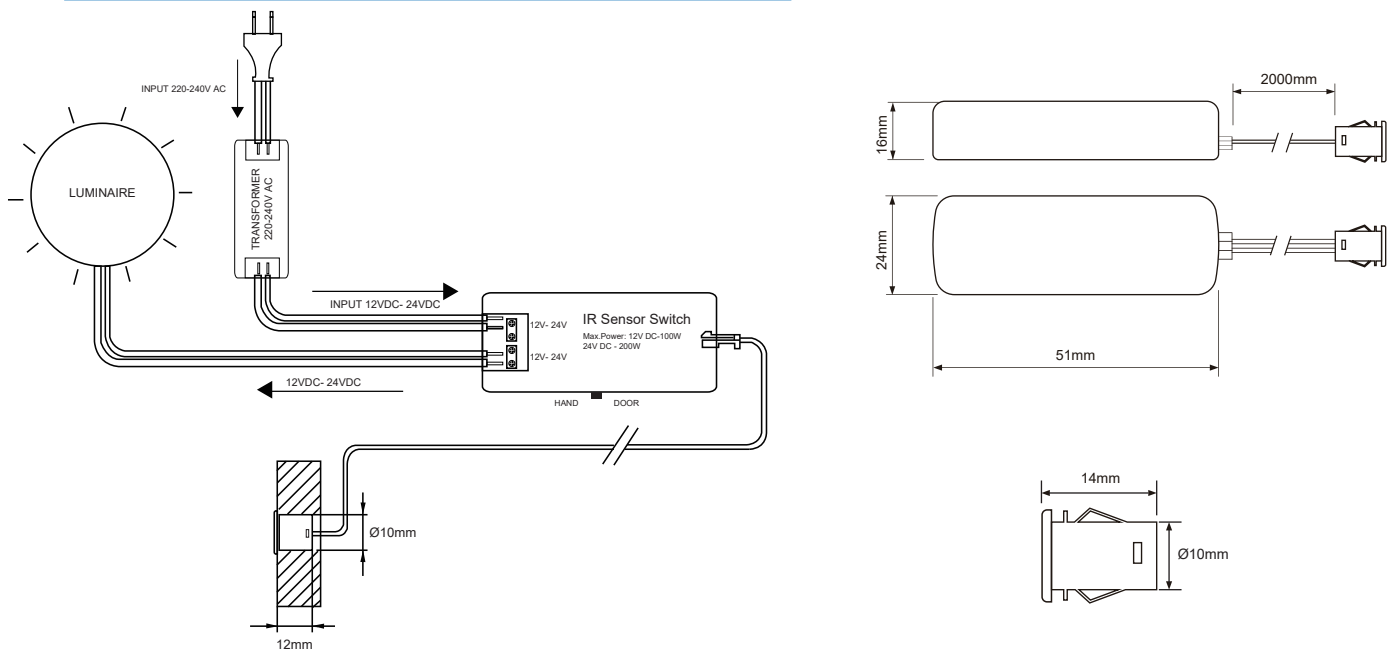
12V - 24V DOOR AND HAND WAVING SENSOR

GENERAL FEATURES

- Input & output: 12VDC- 24VDC
- Max. power output: 12VDC-100W 24VDC-200W
- Mounting type: Recessed mounting / Surface mounting
- Max. current: 10A
- Sensing range: ≤6-7cm (or customized)
- Cable length: 2m sensor cable
- 1m input cable with LED mini connector
- 1m output cable with LED mini connector
- Sensor size: 13x14mm (cutout: 10mm)
- Function switchable:
 - switch ON/OFF when the door opens or closes
 - switch ON/OFF when the hand waves



APPLICATION



SPECIFICATIONS

MODEL NO.	RATED INPUT VOLT.	RATED OUTPUT VOLT.	RATED CURRENT	RATED LOAD
SNT-IRS	12V DC-24V DC	12V DC-24V DC	max. 10A	max. 200W



SNT-PIRS

12V-24V PIR SENSOR



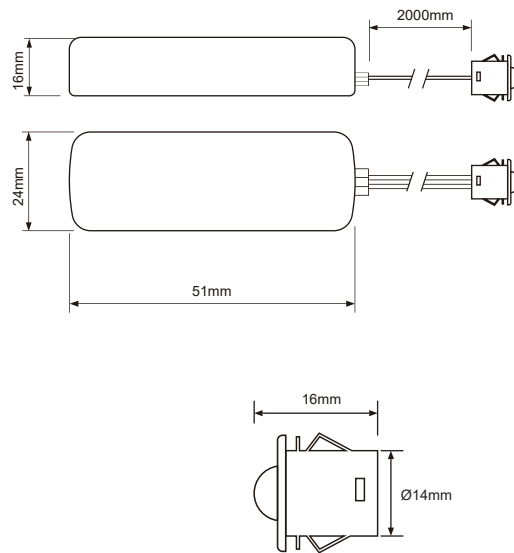
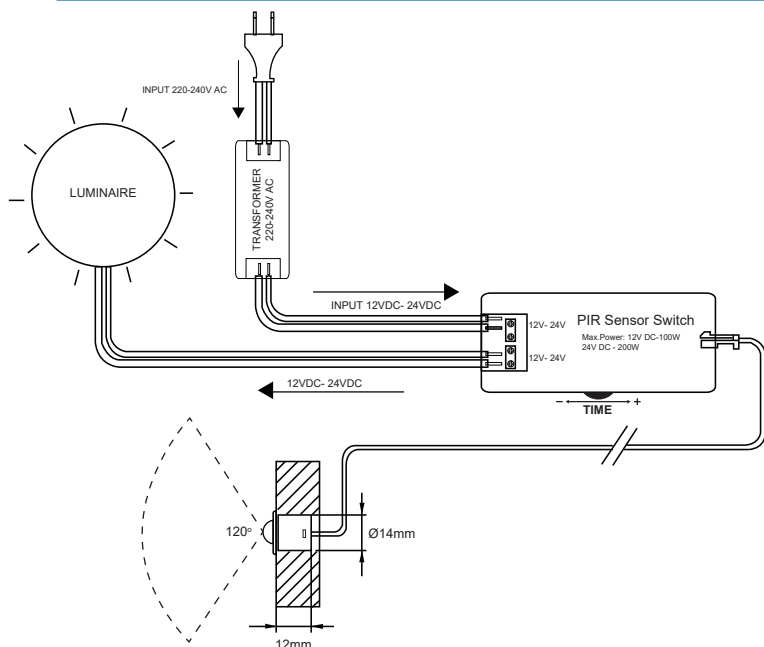
PIR Sensor

Surface mounting

GENERAL FEATURES

- Input & output: 12VDC- 24VDC
- Max. power output: 12VDC-100W / 24VDC-200W
- Mounting type: Recessed mounting / Surface mounting
- Max. current: 10A
- Sensing distance : 1-3 m
- Sensing range : approx. 120°
- Time adjustable : 10 sec. - 150 sec.
- Cable length: 2m sensor cable
- 1m input cable with LED mini connector
- 1m output cable with LED mini connector

APPLICATION



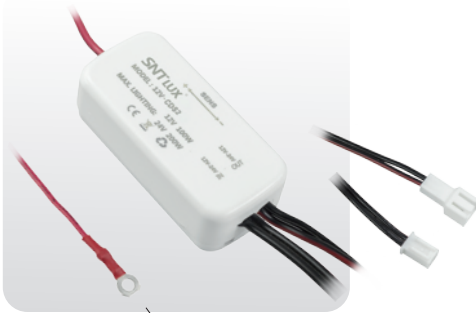
SPECIFICATIONS

MODEL NO.	RATED INPUT VOLT.	RATED OUTPUT VOLT.	RATED CURRENT	RATED LOAD
SNT-PIRS	12V DC-24V DC	12V DC-24V DC	max. 10A	max. 200W

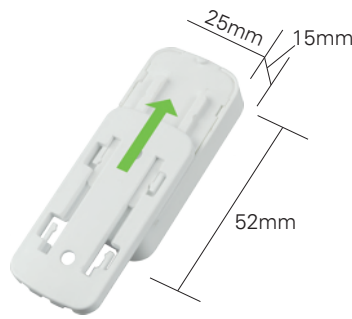


12V-CDS2

DC 12V TOUCH DIMMER SWITCH



2m cable with touch ring outer dia.11mm thickness 0.5mm



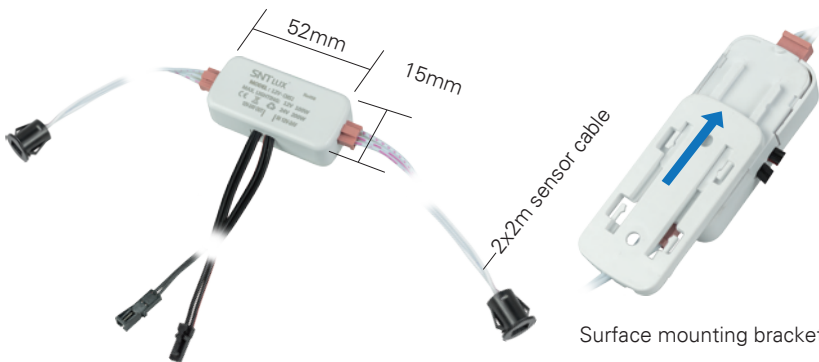
Surface mounting bracket for sliding and locking

SPECIFICATIONS

MODEL NO.	RATED INPUT	RATED LOAD	LIGHTENING CABLE
12V-CPIR	12V DC	max. 30W	2x2m lead with mini connector
12V-CDS	12V DC	max. 30W	2x2m lead with mini connector
12V-CDS2	12V DC	max. 100W	2x2m lead with JST connector

12V-CMS2

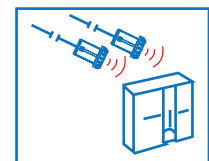
DC 12V DOOR TWIN SENSOR SWITCH



Surface mounting bracket for sliding and locking

GENERAL FEATURES

- Detection range: 0-80mm
- Watt: 0.3-30W
- Touchless ON/OFF switching
- Mounting bracket screw fixing



door opened = light on
door closed = light off

SPECIFICATIONS

MODEL NO.	RATED INPUT	RATED LOAD	LIGHTENING CABLE
12V-CMS	12V DC	max. 30W	2x2m lead with mini connector
12V-CMS2	12V DC	max. 30W	2x2m lead with mini connector
12V-CMSC	12V DC	max. 30W	2x2m lead with mini connector



SNT-USB7

DOUBLE USB SOCKET
DC 5V TO DC 5V 3A

SNT-USB8

DOUBLE USB SOCKET
DC 12/24V TO DC 5V 3.4A

GENERAL FEATURES

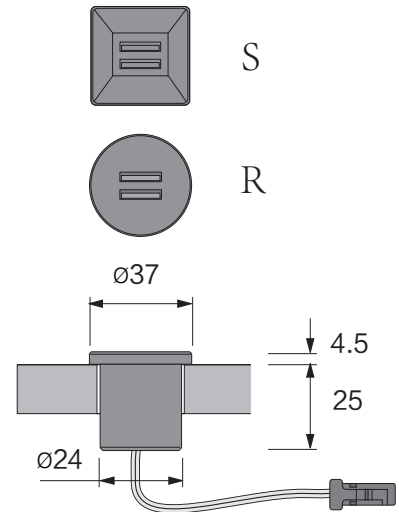
- For recess mounting
- Bottom plate for extended fixing optional
- Finish: black / white / silver coating
- Self-power: <0.5W



Type A: 2xUSB without ground plated



Type B: 2xUSB with metal clips



SPECIFICATIONS

MODEL NO.	RATED INPUT VOLT.	RATED OUTPUT CURRENT	LIGHTENING CABLE
SNT-USB7	DC 5V 3A	5V 3A	2m lead with USB connector
SNT-USB8	DC 12 2A/24V 1A	5V max.1x3.4A/2x1.7A	2m lead with LED mini plug



SNT-USB3F

RECESSED 5W/10W WIRELESS CHARGER WITH USB SOCKET



ACCESSORIES(optional)



1.8M 24&28#PVC WIRE
(90° Micro 5pin+USB A)



L59xW40xH18mm

-Input: 100-240V~50/60Hz,0.6A Max.
-Output: DC 5V 3.0A, 9V 2.0A, 12V 1.5A
USB adapter

GENERAL FEATURES

- Comply with Qi standard
- For recess mounting
- Input with micro USB socket, plug-in power adaptor and lightning cable optional
- With sliding shuttle for protection of water and dust
- With 2 x LED lamp indicating working status
- Finish: black / white / silver coating

ELECTRICAL AND PHOTOMETRIC CHARACTERISTICS

USB3F:

- Input: 9V2A, QC3.0
- Output: DC 5V 1A

Wireless charging:

- Input: DC 9V 2A
- Output: 10W
- Wireless charging distance: <8mm
- Energy conversion rate: >70%
- Self-power consumption < 0.3W

WL003

RECESSED WIRELESS FAST CHARGER



ELECTRICAL AND PHOTOMETRIC CHARACTERISTICS

- Input: DC 5V - 10V / 2A
- Output: 10W(max) / 7.5W / 5W
- Charging distance: <8mm
- Charging efficiency: 72%
- Material: ABS and PC

SPECIFICATIONS

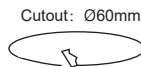
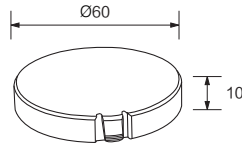
MODEL NO.	RATED INPUT VOLT.	RATED OUTPUT CURRENT	LIGHTENING CABLE
SNT-USB3F	DC 9V 2A	5V 1A / 10W	plug-in power adaptor with 1.8m cable and micro USB plug
WL003	DC 5V - 10V 2A	10W(max.) / 7.5W / 5W	plug-in power adaptor with 1.8m cable and micro USB plug



IP20

SNT-USB4F

HIDDEN WIRELESS CHARGER
QUICK CHARGING SUPPORT



GENERAL FEATURES

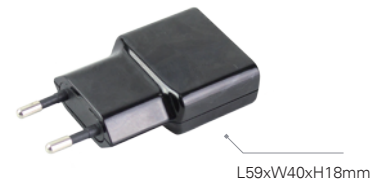
- Comply with Qi standard, protect your mobile phone charging socket
- Hidden in the non-metal material, such as wooden boards
- Built-in overvoltage, overheating, short-circuit protection
- With snap-in mechanism and 1.5m cable with USB plug
- Finish: black

ELECTRICAL AND PHOTOMETRIC CHARACTERISTICS

- Standard: Qi V1.2 compliant
- No. of coil: 1 pc
- Wireless charging distance: <8mm
- Input voltage: DC 5- 9V±5%
- Input current: 2A
- Power loading: max.10W
- Wireless charging efficiency: ≥75%
- Operating temperature: 0-40 °C
- Self-power consumption < 0.5W
- If power adaptors are QC3.0 or 9V2A above, mobile phones support 15W wireless fast charging, meanwhile mobile phones and wireless charger are compatible, then max. output of wireless charging can be 15W



ACCESSORIES (optional)



5V 3.6A adapter needed



Compatible with the most of QiEnabled mobile phones on the market

SPECIFICATIONS

MODEL NO.	RATED INPUT VOLT.	RATED OUTPUT	LIGHTENING CABLE
SNT-USB4F	DC 5-12V	2A	1.5m cable with USB plug



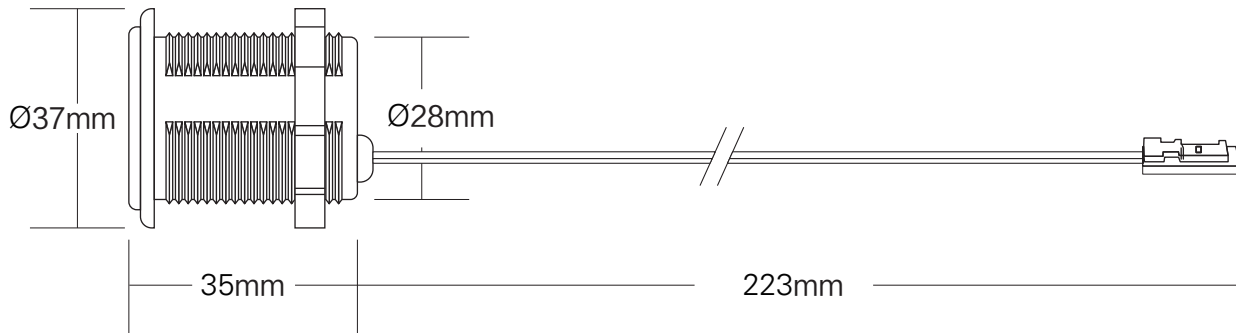
SNT-USB9

TYPE-C/PD socket + USB A QC 3.0 Fast Charging Socket



GENERAL FEATURES

- USB charger
- incl. TYPE-C/PD socket + USB A QC 3.0 fast charging socket
- input 12V - 24V
- output 5V 3.1A/7V 2.4A/12V 1.5A
- 20cm cable 2x0.75mm²PVC + connector



SPECIFICATIONS

MODEL NO.	RATED INPUT VOLT.	RATED OUTPUT CURRENT	LIGHTENING CABLE
SNT-USB9	DC 12V - 24V	5V 3.1A/7V 2.4A/12V 1.5A	20cm cable 2x0.75mm ² PVC + connector



IP20

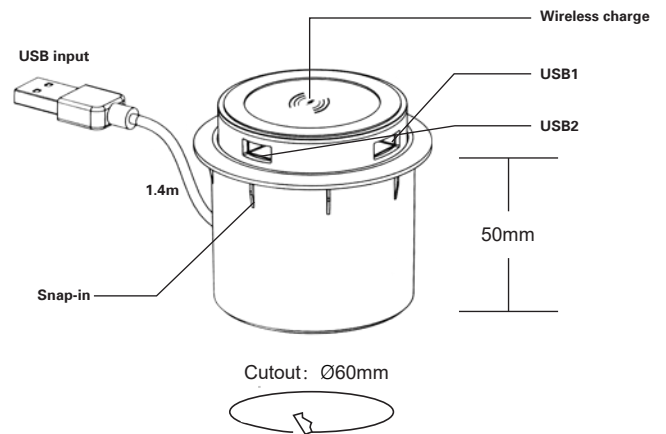
SNT-USB10

EMBEDDED MULTI-FUNCTION WIRELESS CHARGER



GENERAL FEATURES

- Input: QC 3.0 / DC 9V 3.5A
- Output1(wireless charge): 5W / 7.5W / 10W
- Output2(USB1): 5W Max
- Output3(USB2): 5W Max
- Installation diameter: 60mm
- Transmitter distance: ≤8mm
- Charging efficiency: 75%
- In accordance with WPC 1.2.4 Qi standard
- Dimension: D70 x H50mm
- Weight: 70g



Compatible with the most of QiEnabled mobile phones on the market

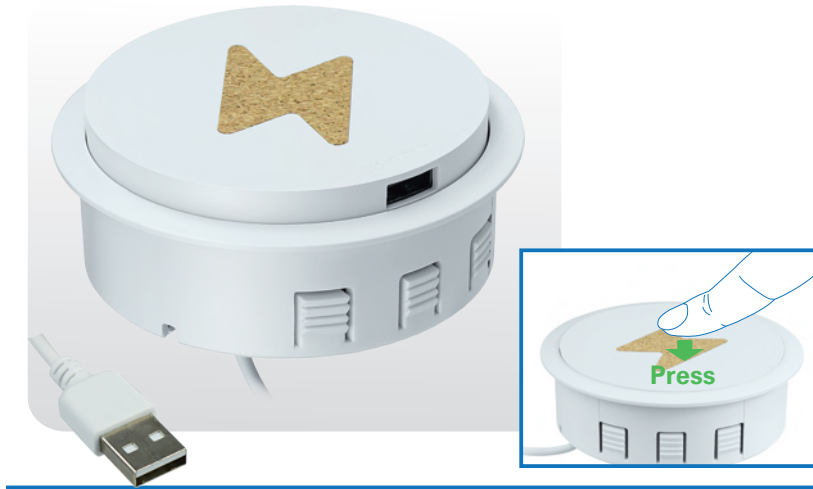
SPECIFICATIONS

MODEL NO.	RATED INPUT VOLT.	OUTPUT
SNT-USB10	QC3.0 / DC 9V 3.5A	5W / 7.5W / 10W



SNT-USB11

EMBEDDED MULTI-FUNCTION WIRELESS CHARGER

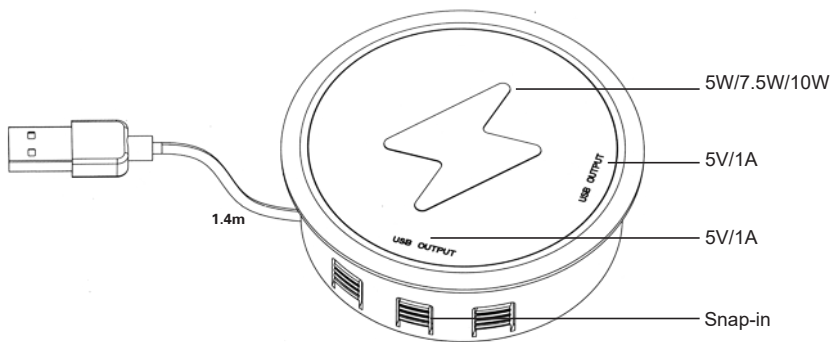


GENERAL FEATURES

- USB push hidden design, keep desktop cleaning
- Overcurrent protection, overvoltage protection
- Short-circuit protection, temperature protection
- Metal foreign body detection protection

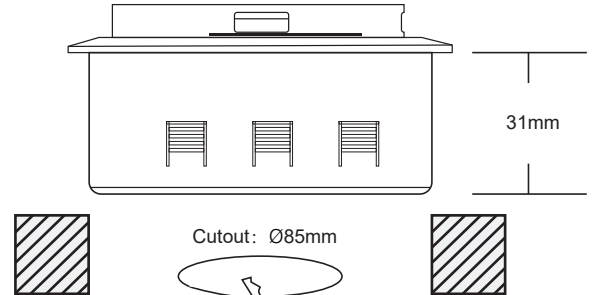
ELECTRICAL AND PHOTOMETRIC CHARACTERISTICS

- Input: QC3.0 / DC 9V 3.5A
- Output power: 5W / 7.5W / 10W
- Wireless transmission distance: 3-10mm
- Wireless charging efficiency: 75%
- In accordance with WPC 1.2.4 Qi standard
- Dimension: D96 x H31mm
- Weight: 150g



Charge three devices at the same time, please choose 30W adapter

Card buckle design fixed function
Easy to install and not loos



Compatible with the most of QiEnabled mobile phones on the market

SPECIFICATIONS

MODEL NO.	RATED INPUT VOLT.	OUTPUT
SNT-USB11	QC3.0 / DC 9V 3.5A	5W / 7.5W / 10W



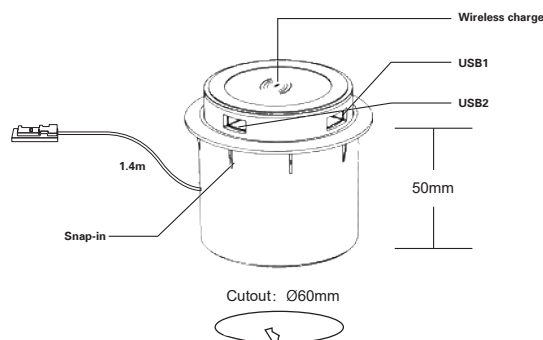
SNT-USB10B

EMBEDDED MULTI-FUNCTION WIRELESS CHARGER



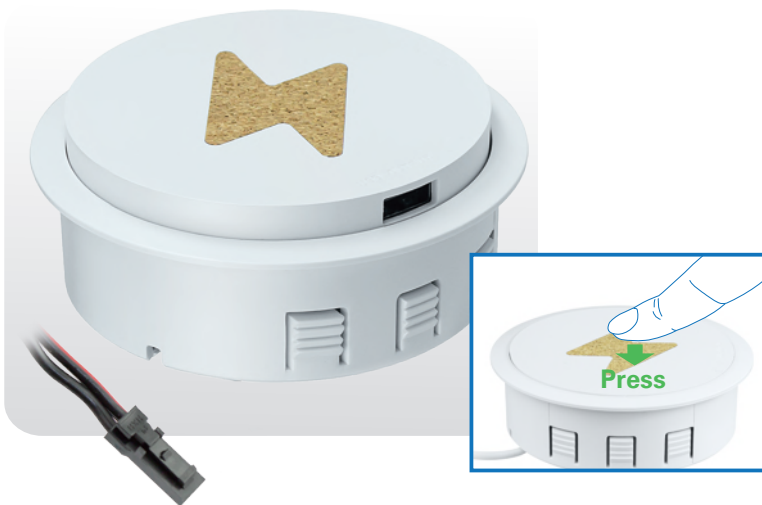
GENERAL FEATURES

- Input: DC 12V-24V 2A
- Output1(wireless charge):5W / 7.5W / 10W
- Output2(USB1): 5W Max
- Output3(USB2): 5W Max
- Installation diameter: 60mm
- Transmitter distance: ≤8mm
- Charging efficiency: 75%
- In accordance with WPC 1.2.4 Qi standard
- Dimension: D70 x H50mm
- Weight: 70g
- Recommended power of driver: 30W



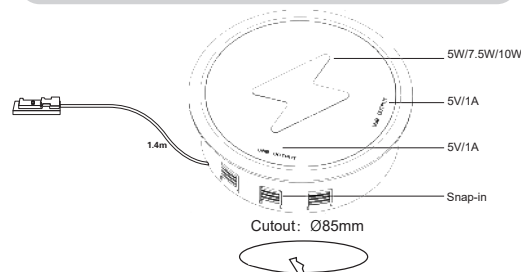
SNT-USB11B

EMBEDDED MULTI-FUNCTION WIRELESS CHARGER



ELECTRICAL AND PHOTOMETRIC CHARACTERISTICS

- Input: DC 12V-24V 2A
- Output power: 5W / 7.5W / 10W
- Wireless transmission distance: 3-10mm
- Wireless charging efficiency: 75%
- In accordance with WPC 1.2.4 Qi standard
- Dimension: D96 x H31mm
- Weight: 150g
- Recommended power of driver: 30W



Compatible with the most of QiEnabled mobile phones on the market



SNT-USB16

USB A & TYPE C CHARGER



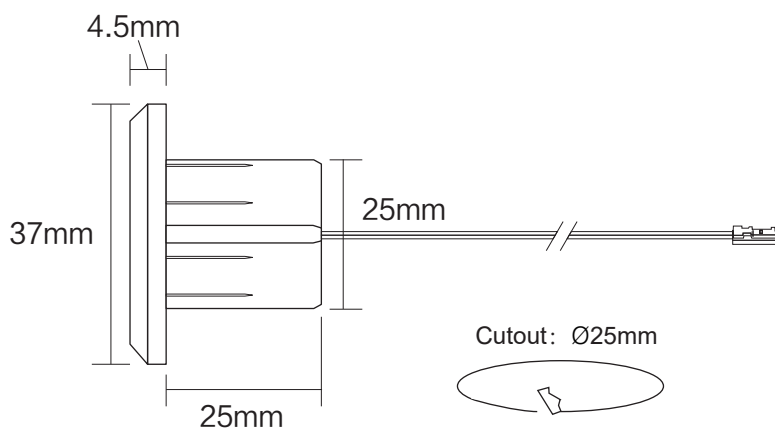
metal clips optional

GENERAL FEATURES

- Recessed mounting
- Cover color: white / black / silver optional
- With 1.4m² x 0.34mm² cable and LED mini connector

ELECTRICAL AND PHOTOMETRIC CHARACTERISTICS

- Input 12/2.5A, 24V / 1.5A
- Output typeC PD 20W: 5V 3A, 9V/2.22A, 12V1.5A,
- USB A 18W: 5V 3A, 9V/2.22A, 12V 1.5A
- Dimension: 37mmx 25mm, Cutout 25mm
- Drilling hole diameter: 25mm
- Stand-by power: < 0.2W
- Recessed mounting and screw fixing



SPECIFICATIONS

MODEL NO.	RATED INPUT VOLT.	OUTPUT
SNT-USB16	12/2.5A, 24V / 1.5A	TypeC PD 20W: 5V 3A, 9V/2.22A, 12V1.5A USB A 18W: 5V 3A, 9V/2.22A, 12V 1.5A



RFS1

2.4G 1xCHANNEL REMOTE DIMMER SWITCH SET



ADVANTAGE

- 2.4G worldwide applicable
- Output contacts 5A load design
- In case of losing remote control, or defect, via key on the receiver you still can switch on or off
- Wall mounting bracket available

ELECTRICAL AND PHOTOMETRIC CHARACTERISTICS

Transmitter

- Frequency: 2.4G
- Working range: 30m
- Working voltage: 3V (CR2032 battery)
- Working current: <6mA
- Static current: <8uA

Receiver

- Receiving Frequency: 2.4G
- Working range: 30m
- Input voltage: DC 12V
- Output power: 60W (max.)
- Single channel load: 60W (max.)

TX1

Transmitter

Key function description

	ON	OFF	+	-
SHORT PRESS	ON	OFF	more brighter step by step	less brighter step by step
LONG PRESS	not working	OFF	dimming upwards	dimming downwards

RX1

Receiver

Key function description

LONG PRESS 2 SECONDS	LONG PRESS 5 SECONDS	SHORT PRESS
Learning mode,lights flash, showing learning status	ON	OFF

RFS2

2.4G 2xCHANNEL REMOTE DIMMER SWITCH SET



ADVANTAGE

- 2.4G worldwide applicable
- Output contacts 5A load design
- In the case of losing the remote control (or defect), you can still control the receiver via a key
- Wall mounting bracket available

ELECTRICAL AND PHOTOMETRIC CHARACTERISTICS

Transmitter

- Frequency: 2.4G
- Working range: 30m
- Working voltage: 3V (CR2032 battery)
- Working current: <6mA
- Static current: <8uA

Receiver

- Receive Frequency: 2.4G
- Working range: 30m
- Input voltage: DC 12V
- Output power: 60W (max.)
- Single channel: 30W (max.)

TX2

Transmitter

Key function description

	CH1/ON/OFF	CH2/ON/OFF	+	-
SHORT PRESS	ON/OFF	ON/OFF	More brighter step by step	Less brighter step by step
LONG PRESS	Not working	Not working	Dimming upwards	Dimming downwards

RX2

Receiver

Key function description

LONG PRESS 2 SECONDS	LONG PRESS 5 SECONDS	SHORT PRESS
Learning mode, lights flash, showing learning status	ON	OFF

RFS4

2.4G 4xCHANNEL REMOTE DIMMER SWITCH SET



ADVANTAGE

- 2.4G worldwide applicable
- Output contacts 5A load design
- In the case of losing the remote control (or defect), you can still control the receiver via a key
- Wall mounting bracket available

ELECTRICAL AND PHOTOMETRIC CHARACTERISTICS

Transmitter

- Frequency: 2.4G
- Working range: 30m
- Working voltage: 3V (CR2032 battery)
- Working current: <6mA
- Static current: <8uA

Receiver

- Receive Frequency: 2.4G
- Working range: 30m
- Input voltage: DC 12V
- Output power: 60W (max.)
- Single channel: 15W (max.)

TX4

Transmitter

Key function description

	CH1/ON/OFF/DIM	CH2/ON/OFF/DIM	CH3/ON/OFF/DIM	CH4/ON/OFF/DIM
SHORT PRESS	ON/OFF	ON/OFF	ON/OFF	ON/OFF
LONG PRESS	CH1 dimming circulated	CH2 dimming circulated	CH3 dimming circulated	CH4 dimming circulated

RX4

Receiver

Key function description

LONG PRESS 2 SECONDS	LONG PRESS 5 SECONDS	SHORT PRESS
Learning mode, lights flash, showing learning status	ON	OFF

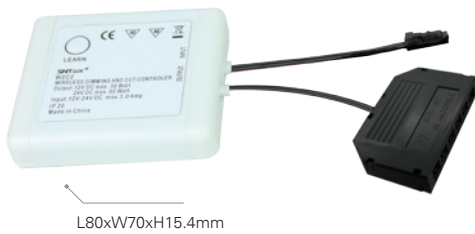
W2C2-12/24

VARIO COLOR TEMPERATURE DIMMING 2.4G WARM WHITE TO COOL WHITE DIMMING

Transmitter (remote controller)



Receiver



GENERAL FEATURES

- 2.4G, 2wire wireless technology, worldwide acceptable
- In the case of losing the remote control (or defect), you can still control the receiver via a key
- Warm white to cool white changing
- With memory function
- With color changing wheel and energy-saving mode
- Wall mounting holder included

ELECTRICAL AND PHOTOMETRIC CHARACTERISTICS

Transmitter (remote controller)

- Frequency: 2.4 G
- Remote controller working distance: 20 meters
- Working voltage range: 2.2-3.3 V (CR2032)

Receiver

- Input: DC 12V/24V
- Output current: 5A
- Output power: 30W/60W
- Dimming mode: PWM
- Color temperature: 3000-6000K
- Receiver frequency: RF 2.4 GHz
- Receiving distance: 20 meters

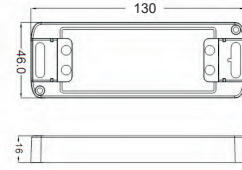


SPECIFICATIONS

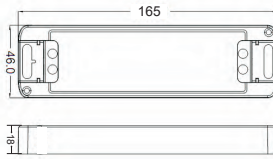
MODEL NO.	DESCRIPTION	INPUT CABLE	OUTPUT CABLE
W2C2-12	12V DC 5A 30W	0.15 m 2x0.5mm ² cable with LED mini plug LV-MP	0.15m 2x0.5mm ² cable with 6 way connector LV-06D
W2C2-24	24V DC 5A 60W	0.15 m 2x0.5mm ² cable with LED mini plug LV-MP	0.15m 2x0.5mm ² cable with 6 way connector LV-06D

LED DRIVER CONSTANT VOLTAGE

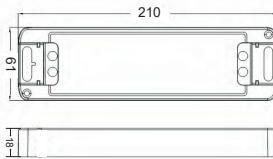
15W / 20W



30W



60W



GENERAL FEATURES

- Open circuit, short circuit, over load and overheating prevention
- SELV equivalent
- Simple installation with terminal block
- RI suppression according to the new EMC standard

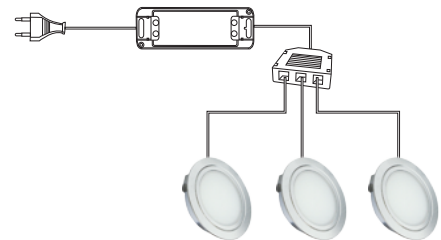


RoHS

EN 61347-1
EN 61000-3-2

EN 61347-2-13
EN 61000-3-3

EN 55015
EN 61547



MODEL NO.	INPUT VOLTAGE	INPUT FREQUENCY	OUTPUT VOLTAGE	OUTPUT CURRENT(mA)	POWER FACTOR	MAX.LOAD	AMBIENT TEMPERATURE	DIMENSION (mm) LxWxH
SNT-12V15WB	220-240V AC	50/60Hz	12V	100-1250mA	>0.76	15W	-20°C...+40°C	130x46x16mm
SNT-24V15WB	220-240V AC	50/60Hz	24V	100-625mA	>0.76	15W	-20°C...+40°C	130x46x16mm
SNT-12V20WB	220-240V AC	50/60Hz	12V	100-1660mA	>0.78	20W	-20°C...+40°C	130x46x16mm
SNT-24V20WB	220-240V AC	50/60Hz	24V	100-830mA	>0.78	20W	-20°C...+40°C	130x46x16mm
SNT-12V30WB	220-240V AC	50/60Hz	12V	100-2500mA	>0.92	30W	-20°C...+40°C	165x46x18mm
SNT-24V30WB	220-240V AC	50/60Hz	24V	100-1250mA	>0.92	30W	-20°C...+40°C	165x46x18mm
SNT-12V60WB	220-240V AC	50/60Hz	12V	100-5000mA	>0.92	60W	-20°C...+40°C	210x61x18mm
SNT-24V60WB	220-240V AC	50/60Hz	24V	100-2500mA	>0.92	60W	-20°C...+40°C	210x61x18mm



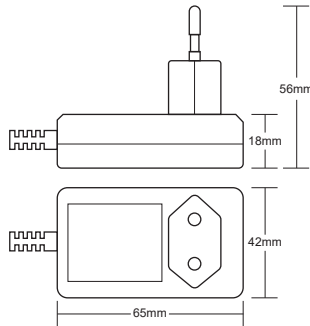
RoHS

SUPER SLIM LED PLUG-IN DRIVER WITH CONNECTOR SOCKET OR WITH OUTPUT CABLE

3.6W / 6W(A/B)



Super Slim
18mm



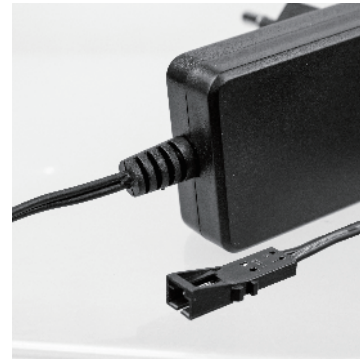
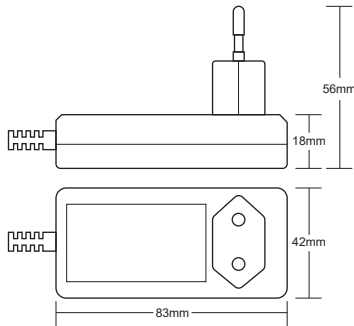
GENERAL FEATURES

- PRI: 220-240V 50/60Hz
- SELV equivalent
- RI suppression according to the new EMC standard
- Slim design, minimize the distance between furnitur and wall
- Integrated LED connector socket, make the different cable length possible

12W / 15W(A/B)



Super Slim
18mm



A Type



B Type



DIY Structure
Easy to connect

MODEL NO.	INPUT VOLTAGE	INPUT FREQUENCY	OUTPUT VOLTAGE	OUTPUT CURRENT(MA)	POWER FACTOR	MAX.LOAD	STANDBY COMSUMPTION	AMBIENT TEMPERATURE	DIMENSION (MM) LXWXH
SNT-3.6WP	220-240V AC	50/60Hz	12V	100-1250mA	0.75	3.6W	<0.1W	-20°C...+40°C	65x42x56mm
SNT-6WP	220-240V AC	50/60Hz	12V	100-625mA	0.75	6W	<0.1W	-20°C...+40°C	65x42x56mm
SNT-12WP	220-240V AC	50/60Hz	12V	100-1660mA	0.72	12W	<0.5W	-20°C...+40°C	83x42x56mm
SNT-15WP	220-240V AC	50/60Hz	12V	100-830mA	0.76	15W	<0.5W	-20°C...+40°C	83x42x56mm

ErP



RoHS

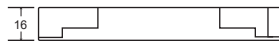
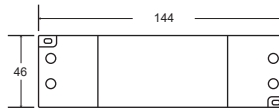
EN 61347-1
EN 61000-3-2

EN 61347-2-13
EN 61000-3-3

EN 55015
EN 61547

SUPER SLIM LED DRIVER CONSTANT VOLTAGE

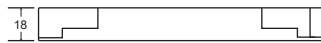
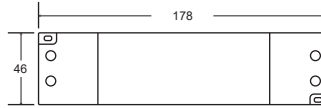
15W / 20W



GENERAL FEATURES

- Open circuit, short circuit, over load and overheating protection
- SELV equivalent
- RI suppression according to the new EMC standard
- Cable connection with terminal possible. Prewired cable strongly recommended

30W



MODEL NO.	INPUT VOLTAGE	INPUT FREQUENCY	OUTPUT VOLTAGE	OUTPUT CURRENT(MA)	POWER FACTOR	STANDBY COMSUMPTION	MAX.LOAD	AMBIENT TEMPERATURE	DIMENSION (MM) LXWXH
SNT-12V15WB	220-240V AC	50/60Hz	12V	100-1250mA	>0.76	< 0.4W	15W	-20°C...+40°C	144x46x16mm
SNT-24V15WB	220-240V AC	50/60Hz	24V	100-625mA	>0.76	< 0.4W	15W	-20°C...+40°C	144x46x16mm
SNT-12V20WB	220-240V AC	50/60Hz	12V	100-1660mA	>0.78	< 0.4W	20W	-20°C...+40°C	144x46x16mm
SNT-24V20WB	220-240V AC	50/60Hz	24V	100-830mA	>0.78	< 0.4W	20W	-20°C...+40°C	144x46x16mm
SNT-12V30WB	220-240V AC	50/60Hz	12V	100-2500mA	>0.92	0.5W	30W	-20°C...+40°C	178x46x18mm
SNT-24V30WB	220-240V AC	50/60Hz	24V	100-1250mA	>0.92	0.5W	30W	-20°C...+40°C	178x46x18mm

ErP RoHS

EN 61347-1 EN 61347-2-13 EN 55015
EN 61000-3-2 EN 61000-3-3 EN 61547



7.6mm Mini HVL760 Connector System

250V 2 pole/3 pole high voltage connector system for luminaires

- The 7.6mm MiniHVL760 connector system is designed according to the IEC60320 standard for lighting industry applications
- The system is applicable for power connections and coupling between lumps such as wiring for lighting for office, kitchen, bathroom, shop, or household furniture, display cabinets and mountable lighting
- 7.6mm outer diameter including the mini plug in order to fit into an 8mm furniture hole
- Connection: 2.5A 250V AC
- Power Cable: all come with 2m VDE H03VVH2-F 2x0.75mm²



	HV - FME	Extension Lead <ul style="list-style-type: none"> ■ mini male plug ■ mini female socket ■ 2.5A/250V AC ■ H03VVH2-F 2x0.75mm² white ■ white
	HV - FMES	Extension Lead <ul style="list-style-type: none"> ■ mini male plug for connecting switch ■ mini female socket ■ 2.5A/250V AC ■ H03VVH2-F 2x0.75mm² white ■ red
	HV - 01D	Supply Lead <ul style="list-style-type: none"> ■ mini female socket ■ euro plug ■ 2.5A/250V AC ■ H03VVH2-F 2x0.75mm² white ■ white
	HV - 02D	Supply Lead/2-way distributor <ul style="list-style-type: none"> ■ 2-way distributor ■ euro plug ■ 2.5A/250V AC ■ H03VVH2-F 2x0.75mm² white ■ white
	HV - 02DS	Supply Lead/2-way distributor <ul style="list-style-type: none"> ■ 1-way distributor+switch(red hole=switch) ■ euro plug ■ 2.5A/250V AC ■ H03VVH2-F 2x0.75mm² white ■ white
	HV - 06D	Supply Lead/6-way distributor <ul style="list-style-type: none"> ■ 6-way distributor(1way closed) ■ euro plug ■ 2.5A/250V AC ■ H03VVH2-F 2x0.75mm² white ■ white
	HV - 06DS	Supply Lead/6-way distributor+switch <ul style="list-style-type: none"> ■ 6-way distributor+switch(red hole=switch) ■ euro plug ■ 2.5A/250V AC ■ H03VVH2-F 2x0.75mm² white ■ white
	HV - EuroS	Surface Mounted Switch Ø 65 <ul style="list-style-type: none"> ■ end minihvl 760 red plug ■ 2.5A/250V AC ■ H03VVH2-F 2x0.75mm² white ■ silver colour
	HV - EuroR	Recess Mounted Switch Ø 65 <ul style="list-style-type: none"> ■ end minihvl 760 red plug ■ 2.5A/250V AC ■ H03VVH2-F 2x0.75mm² white ■ silver colour

12V LED Mini Connector System for LED lights

- The mini connector system is a 2 pole appliance wiring system, developed for cabinet LED lighting and furniture LED lighting
- It includes the coupling (plug & socket), 3-way, 4-way, 6-way, and 10-way distribution, as well as two PCB sockets
- All distributors have parallel and series circuits
- The plug is only 5.0mm wide (fits though an 8mm furniture hole)
- Connection: 3A, 12V DC
- All cables come with a 0.3m VDE H03VVH2-F 2×0.5mm² or LIYZ 2×0.34mm²



	<p>LV- 03D</p>	<p>3-way distributor</p> <ul style="list-style-type: none"> ■ 3-way distributor ■ terminal ends ■ 12V 7A/with cable 2*0.75mm² ■ parallel or serial ■ black
	<p>LV- 06D</p>	<p>6-way distributor</p> <ul style="list-style-type: none"> ■ 6-way distributor ■ terminal ends ■ 12V 7A/with cable 2*0.75mm² ■ parallel or serial ■ black
	<p>LV- 243D</p>	<p>3-way distributor</p> <ul style="list-style-type: none"> ■ 3-way distributor ■ terminal ends ■ 24V 3.5A/with cable 2*0.75mm² ■ parallel or serial ■ white
	<p>LV- 246D</p>	<p>6-way distributor</p> <ul style="list-style-type: none"> ■ 6-way distributor ■ terminal ends ■ 24V 3.5A/with cable 2*0.75mm² ■ parallel or serial ■ white
	<p>LV- EX12</p>	<p>Extension Lead</p> <ul style="list-style-type: none"> ■ 12~24V/3A ■ mini plug + mini socket ■ LIYZ 2x0.34mm² black/red ■ black
	<p>LV- EX24</p>	<p>Extension Lead</p> <ul style="list-style-type: none"> ■ 12~24V/3A ■ mini plug + mini socket ■ LIYZ 2x0.34mm² white/black ■ white



Dongguan Speedtek Electronic Co., Ltd.

Add.: 3F, 6 Building, Yingshuo Industrial Park, 177 Wenming Rd., Qiaotou Town, Dongguan, Guangdong, 523520 China
Phone: 0086 769 81036985 E-mail: snt@speedtek.com.cn Web.: www.speedtek.com.cn